

ENPP2 RABBIT PAB

Cat.#: N225181

Product Name: Anti-ENPP2 Rabbit pAb

Synonyms: ENPP2; ATX; PDNP2; Ectonucleotide pyrophosphatase/phosphodiesterase family member 2; E-NPP 2; Autotaxin; Extracellular lysophospholipase D; LysoPLD

UNIPROT ID: Q13822

Background: Hydrolyzes lysophospholipids to produce the signaling molecule lysophosphatidic acid (LPA) in extracellular fluids.

Immunogen: The antiserum was produced against synthesized peptide derived from the Internal region of human ENPP2. AA range:401-450

Applications: WB,ELISA

Recommended Dilutions: WB: 1/500-1/1000 ELISA: 1/10000

Host Species: Rabbit

Clonality: Rabbit Polyclonal

Clone ID: -

MW: Calculated MW: 99 kDa; Observed MW: 99 kDa

Isotype: IgG

Purification: Affinity Purified

Species Reactivity: Human,Mouse,Rat

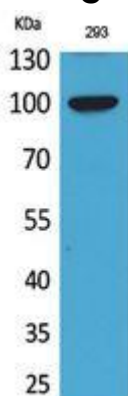
Conjugation: Unconjugated

Modification: Unmodified

Constituents: PBS (without Mg²⁺ and Ca²⁺), pH 7.3 containing 50% glycerol, 0.5% BSA and 0.02% sodium azide

Research Areas: Cancer

Storage & Shipping: Store at -20°C. Avoid repeated freezing and thawing



Western blot analysis of ENPP2 in 293 lysates using ENPP2 antibody.



Product Description

Pioneering GTPase and Oncogene Product Development since 2010
