

## ENPP4 RABBIT PAB

**Cat.#:** S220523

**Product Name:** Anti-ENPP4 Rabbit Polyclonal Antibody

**Synonyms:** NPP4

**UNIPROT ID:** Q9Y6X5 (Gene Accession - NP\_055751)

**Background:** NPP4, also known as ENPP4 (ectonucleotide pyrophosphatase/phosphodiesterase family member 4), is a 453 amino acid single-pass type I membrane protein that belongs to the nucleotide pyrophosphatase/phosphodiesterase family. The gene that encodes NPP4 consists of approximately 16,736 bases and maps to human chromosome 6p21.1. Making up nearly 6% of the human genome, chromosome 6 contains around 1,200 genes within 170 million base pairs of sequence. Deletion of a portion of the q arm of chromosome 6 is associated with early onset intestinal cancer suggesting the presence of a cancer susceptibility locus. Porphyria cutanea tarda is associated with chromosome 6 through the HFE gene, and Stickler syndrome, 21-hydroxylase deficiency and maple syrup urine disease are also associated with genes on chromosome 6. Notably, the PARK2 gene, which is associated with Parkinson's disease, and the genes encoding the major histocompatibility complex proteins are also located on chromosome 6. A bipolar disorder susceptibility locus has been identified on the q arm of chromosome 6.

**Immunogen:** Synthetic peptide of human ENPP4

**Applications:** ELISA, WB, IHC

**Recommended Dilutions:** IHC: 25-100;WB: 500-2000;ELISA: 2000-5000

**Host Species:** Rabbit

**Clonality:** Rabbit Polyclonal

**Isotype:** Immunogen-specific rabbit IgG

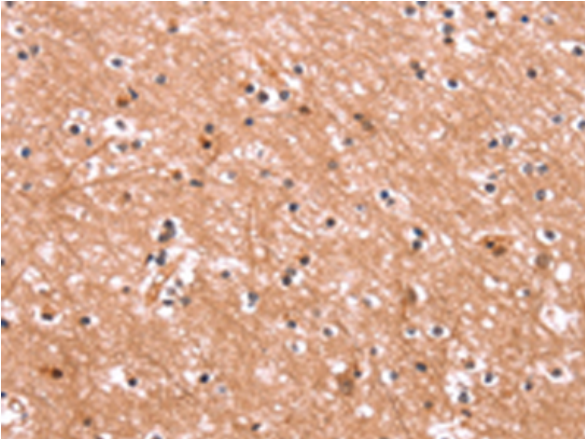
**Purification:** Antigen affinity purification

**Species Reactivity:** Human

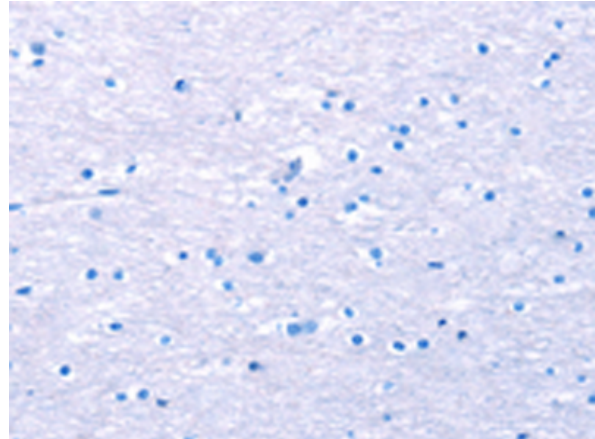
**Constituents:** PBS (without Mg<sup>2+</sup> and Ca<sup>2+</sup>), pH 7.4, 150 mM NaCl, 0.05% Sodium Azide and 40% glycerol

**Research Areas:** Cell Biology

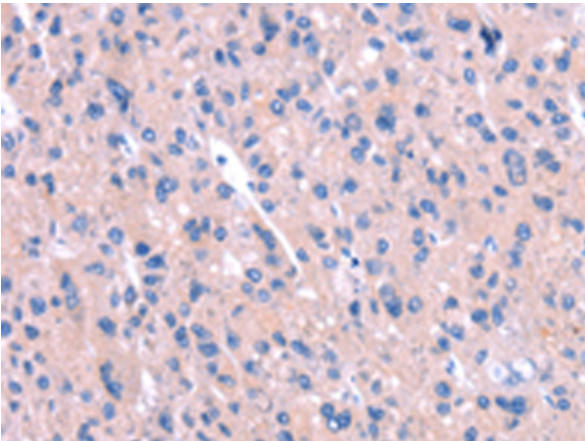
**Storage & Shipping:** Store at -20°C. Avoid repeated freezing and thawing



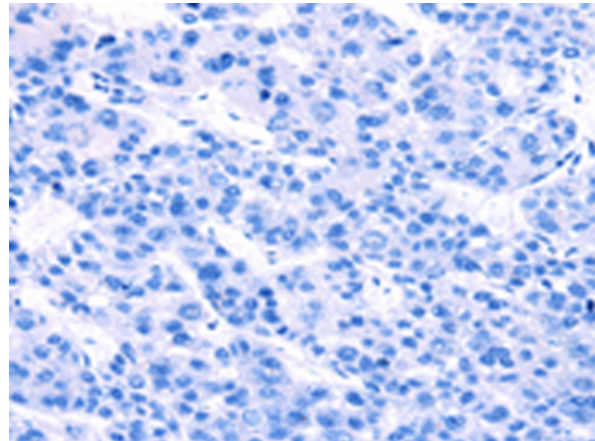
Immunohistochemistry analysis of paraffin embedded Human brain tissue using 220523(ENPP4 Antibody) at a dilution of 1/15(Cytoplasm).



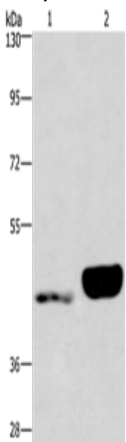
In comparison with the IHC on the left, the same paraffin-embedded Human brain tissue is first treated with the synthetic peptide and then with 220523(Anti-ENPP4 Antibody) at dilution 1/15.



The image on the left is immunohistochemistry of paraffin-embedded Human liver cancer tissue using 220523(Anti-ENPP4 Antibody) at a dilution of 1/15.



In comparison with the IHC on the left, the same paraffin-embedded Human liver cancer tissue is first treated with synthetic peptide and then with D261647(Anti-ENPP4 Antibody) at dilution 1/15.



Gel: 6%SDS-PAGE, Lysate: 40 µg;  
Lane 1-2: Human endometrial cancer tissue,  
Human placenta tissue;  
Primary antibody: 220523(ENPP4 Antibody) at  
dilution 1/200;  
Secondary antibody: Goat anti rabbit IgG at  
1/8000 dilution;  
Exposure time: 40 seconds



# Product Description

Pioneering GTPase and Oncogene Product Development since 2010

---