

## ENPP5 RABBIT PAB

**Cat.#:** S216490

**Product Name:** Anti-ENPP5 Rabbit Polyclonal Antibody

**Synonyms:** NPP-5

**UNIPROT ID:** Q9UJA9 (Gene Accession - BC027615 )

**Background:** ENPP5 is a single-pass membrane protein that belongs to the nucleotide pyrophosphatase/phosphodiesterase family. It may play a role in neuronal cell communication, and it lacks nucleotide pyrophosphatase and lysopholipase D activity.

**Immunogen:** Fusion protein of human ENPP5

**Applications:** ELISA, IHC

**Recommended Dilutions:** IHC: 100-300; ELISA: 2000-10000

**Host Species:** Rabbit

**Clonality:** Rabbit Polyclonal

**Isotype:** Immunogen-specific rabbit IgG

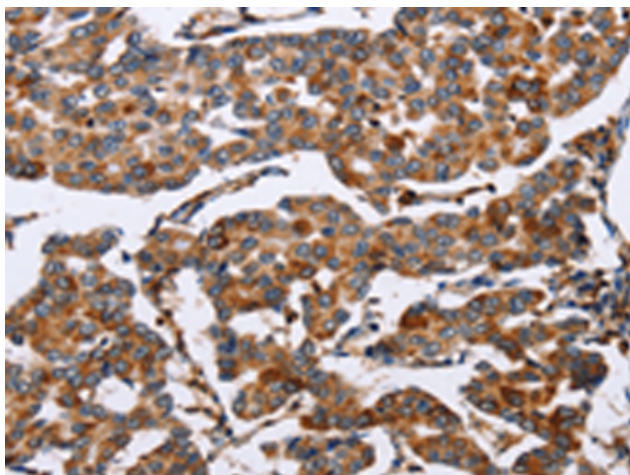
**Purification:** Antigen affinity purification

**Species Reactivity:** Human, Mouse, Rat

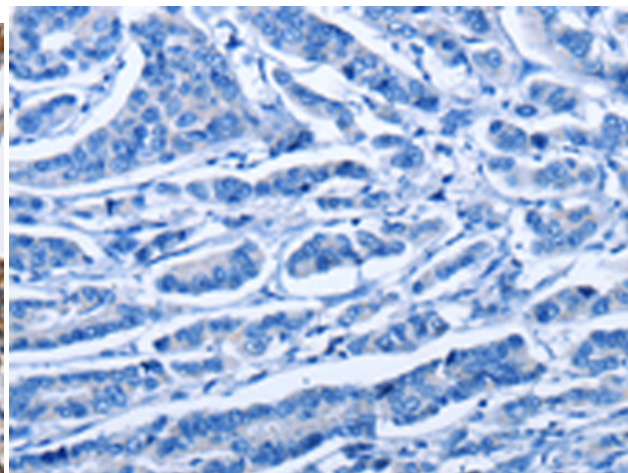
**Constituents:** PBS (without Mg<sup>2+</sup> and Ca<sup>2+</sup>), pH 7.4, 150 mM NaCl, 0.05% Sodium Azide and 40% glycerol

**Research Areas:** Neuroscience

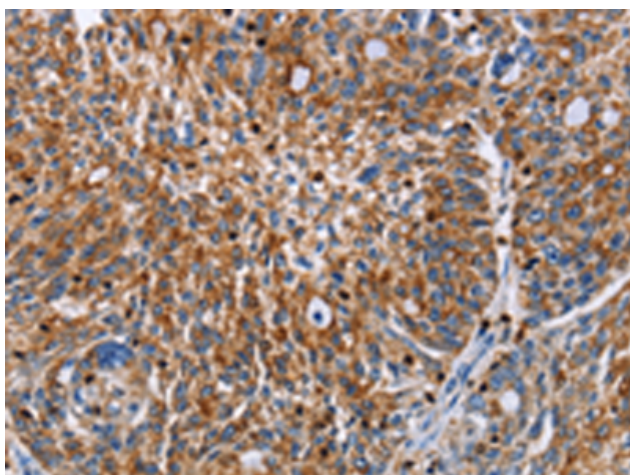
**Storage & Shipping:** Store at -20°C. Avoid repeated freezing and thawing



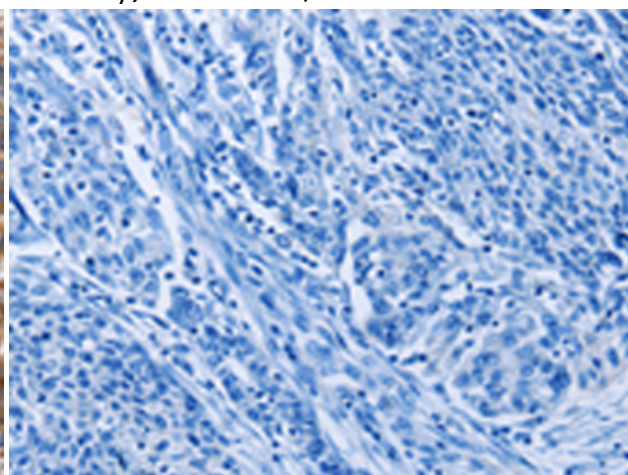
Immunohistochemistry analysis of paraffin embedded Human breast cancer tissue using 216490(ENPP5 Antibody) at a dilution of 1/60(Cytoplasm).



In comparison with the IHC on the left, the same paraffin-embedded Human breast cancer tissue is first treated with the fusion protein and then with 216490(Anti-ENPP5 Antibody) at dilution 1/60.



The image on the left is immunohistochemistry of paraffin-embedded Human ovarian cancer tissue using 216490(Anti-ENPP5 Antibody) at a dilution of 1/60.



In comparison with the IHC on the left, the same paraffin-embedded Human ovarian cancer tissue is first treated with fusion protein and then with D220593(Anti-ENPP5 Antibody) at dilution 1/60.