

ENT2 RABBIT MAB

Cat.#: N262182

Product Name: Anti-ENT2 Rabbit Monoclonal Antibody

Synonyms: DER12; ei-type; HNP36; Nucleoside transporter; SLC29A2

UNIPROT ID: Q14542

Background: Mediates equilibrative transport of purine, pyrimidine nucleosides and the purine base hypoxanthine. Very less sensitive than SLC29A1 to inhibition by nitrobenzylthioinosine (NBMPR), dipyridamole, dilazep and draflazine.

Immunogen: A synthetic peptide of human ENT2

Applications: WB,IHC-F,IHC-P,ICC/IF

Recommended Dilutions: WB: 1/500-1/1000 IHC: 1/50-1/100 IF: 1/50-1/200

Host Species: Rabbit

Clonality: Rabbit Monoclonal

Clone ID: R03-2K6

MW: Calculated MW: 50 kDa; Observed MW: 60 kDa

Isotype: IgG

Purification: Affinity Purified

Species Reactivity: Human

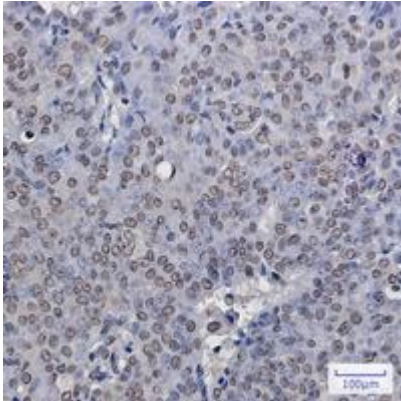
Conjugation: Unconjugated

Modification: Unmodified

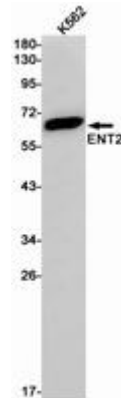
Constituents: PBS (without Mg²⁺ and Ca²⁺), pH 7.3 containing 50% glycerol, 0.5% BSA and 0.02% sodium azide

Research Areas: Signal Transduction

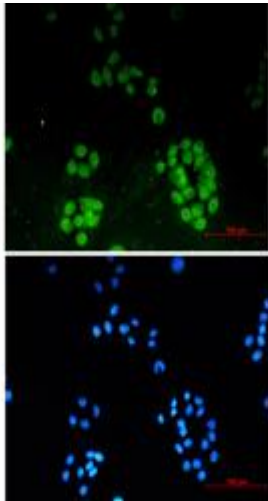
Storage & Shipping: Store at -20°C. Avoid repeated freezing and thawing



Immunohistochemistry analysis of paraffin-embedded Human breast cancer using ENT2 antibody. High-pressure and temperature Sodium Citrate pH 6.0 was used for antigen retrieval.



Western blot analysis of ENT2 in K562 lysates using ENT2 antibody.



Immunocytochemistry analysis of ENT2 (green) in HeLa using ENT2 antibody, and DAPI (blue)