

## ENTPD4 RABBIT PAB

**Cat.#:** S219405

**Product Name:** Anti-ENTPD4 Rabbit Polyclonal Antibody

**Synonyms:** LAP70; LALP70; LYSAL1; UDPase; NTPDase-4

**UNIPROT ID:** Q9Y227 (Gene Accession - BC034477 )

**Background:** This gene encodes a member of the apyrase protein family. Apyrases are enzymes that catalyze the hydrolysis of nucleotide diphosphates and triphosphates in a calcium or magnesium-dependent manner. The encoded protein is an endo-apyrase and may play a role in salvaging nucleotides from lysosomes. Alternatively spliced transcript variants encoding multiple isoforms have been observed for this gene, and these isoforms may differ in divalent cation dependence and substrate specificity.

**Immunogen:** Fusion protein of human ENTPD4

**Applications:** ELISA, IHC

**Recommended Dilutions:** IHC: 200-300; ELISA: 5000-10000

**Host Species:** Rabbit

**Clonality:** Rabbit Polyclonal

**Isotype:** Immunogen-specific rabbit IgG

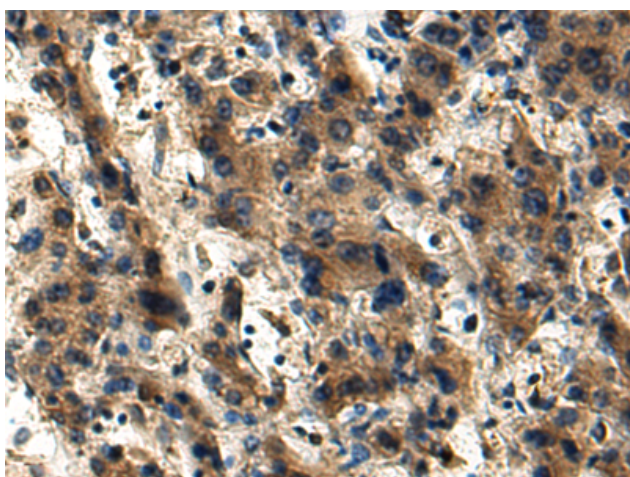
**Purification:** Antigen affinity purification

**Species Reactivity:** Human, Mouse

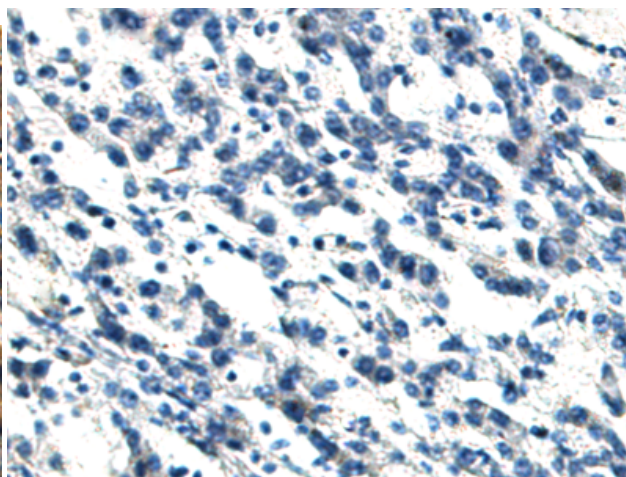
**Constituents:** PBS (without Mg<sup>2+</sup> and Ca<sup>2+</sup>), pH 7.4, 150 mM NaCl, 0.05% Sodium Azide and 40% glycerol

**Research Areas:** Epigenetics and Nuclear Signaling

**Storage & Shipping:** Store at -20°C. Avoid repeated freezing and thawing



Immunohistochemistry analysis of paraffin embedded Human liver cancer tissue using 219405(ENTPD4 Antibody) at a dilution of 1/180(Cytoplasm).



In comparison with the IHC on the left, the same paraffin-embedded Human liver cancer tissue is first treated with the fusion protein and then with 219405(Anti-ENTPD4 Antibody) at dilution 1/180.