

## EPAC1 RABBIT MAB

**Cat.#:** N262183

**Product Name:** Anti-Epac1 Rabbit Monoclonal Antibody

**Synonyms:** RAPGEF3; CGEF1; EPAC; EPAC1; Rap guanine nucleotide exchange factor 3; Exchange factor directly activated by cAMP 1; Exchange protein directly activated by cAMP 1; EPAC 1; Rap1 guanine-nucleotide-exchange factor directly activated by cAMP

**UNIPROT ID:** O95398

**Background:** The activation of RaPI by cAMP is independent of PKA and is mediated by recently discovered family of guanine nucleotide exchange factors (GEFs) called cAMP-GEFs or Epacs. The Epac signaling therefore represents a novel mechanism for cAMP signaling with in the cAMP cascade.

**Immunogen:** A synthetic peptide of human Epac1

**Applications:** WB,IP

**Recommended Dilutions:** WB: 1/500-1/1000 IP: 1/20

**Host Species:** Rabbit

**Clonality:** Rabbit Monoclonal

**Clone ID:** R05-6B2

**MW:** Calculated MW: 104 kDa; Observed MW: 104 kDa

**Isotype:** IgG

**Purification:** Affinity Purified

**Species Reactivity:** Human,Mouse

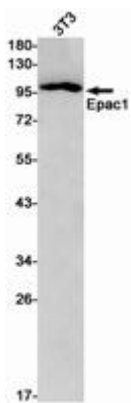
**Conjugation:** Unconjugated

**Modification:** Unmodified

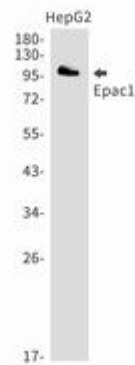
**Constituents:** PBS (without Mg<sup>2+</sup> and Ca<sup>2+</sup>), pH 7.3 containing 50% glycerol, 0.5% BSA and 0.02% sodium azide

**Research Areas:** Signal Transduction

**Storage & Shipping:** Store at -20°C. Avoid repeated freezing and thawing



Western blot analysis of Epac1 in 3T3 lysates using Epac1 antibody.



Western blot analysis of Epac1 in HepG2 lysates using Epac1 antibody.