

## EPAC1 RABBIT PAB

**Cat.#:** N225927

**Product Name:** Anti-Epac1 Rabbit pAb

**Synonyms:** RAPGEF3; CGEF1; EPAC; EPAC1; Rap guanine nucleotide exchange factor 3; Exchange factor directly activated by cAMP 1; Exchange protein directly activated by cAMP 1; EPAC 1; Rap1 guanine-nucleotide-exchange factor directly activated by cAMP

**UNIPROT ID:** O95398

**Background:** The activation of RaPI by cAMP is independent of PKA and is mediated by recently discovered family of guanine nucleotide exchange factors (GEFs) called cAMP-GEFs or Epacs. The Epac signaling therefore represents a novel mechanism for cAMP signaling with in the cAMP cascade.

**Immunogen:** A synthesized peptide derived from human Epac1

**Applications:** WB,IHC-P,ICC/IF,IP

**Recommended Dilutions:** WB: 1/500-1/1000 IHC: 1/50-1/100 IF: 1/50-1/200 IP: 1/20

**Host Species:** Rabbit

**Clonality:** Rabbit Polyclonal

**Clone ID:** -

**MW:** Calculated MW: 104 kDa; Observed MW: 104 kDa

**Isotype:** IgG

**Purification:** Affinity Chromatography

**Species Reactivity:** Human,Mouse,Rat

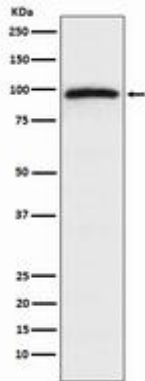
**Conjugation:** Unconjugated

**Modification:** Unmodified

**Constituents:** PBS (without Mg<sup>2+</sup> and Ca<sup>2+</sup>), pH 7.3 containing 50% glycerol, 0.5% BSA and 0.02% sodium azide

**Research Areas:** Signal Transduction

**Storage & Shipping:** Store at -20°C. Avoid repeated freezing and thawing



Western blot analysis of Epac1 in HeLa lysates using Epac1 antibody.