

EPB41L2 RABBIT PAB

Cat.#: S221958

Product Name: Anti-EPB41L2 Rabbit Polyclonal Antibody

Synonyms: 4.1G; 4.1-G

UNIPROT ID: O43491 (Gene Accession - NP_001422)

Background: Required for dynein-dynactin complex and NUMA1 recruitment at the mitotic cell cortex during anaphase (PubMed:23870127).

Immunogen: Synthetic peptide of human EPB41L2

Applications: ELISA, IHC

Recommended Dilutions: IHC: 50-100; ELISA: 5000-10000

Host Species: Rabbit

Clonality: Rabbit Polyclonal

Isotype: Immunogen-specific rabbit IgG

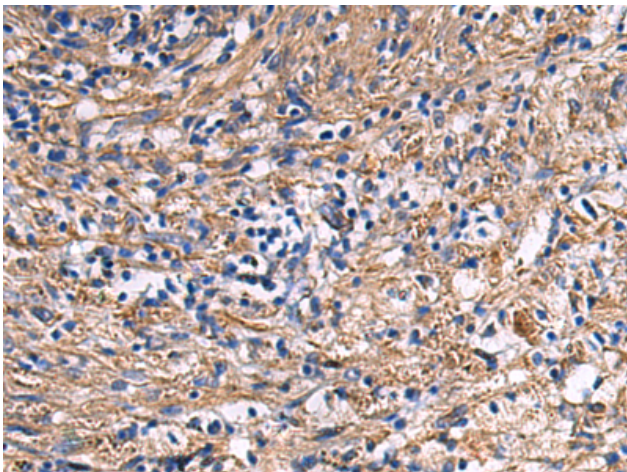
Purification: Antigen affinity purification

Species Reactivity: Human, Mouse

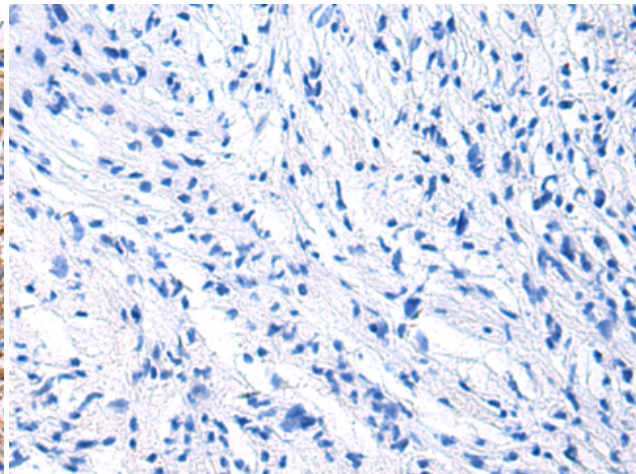
Constituents: PBS (without Mg²⁺ and Ca²⁺), pH 7.4, 150 mM NaCl, 0.05% Sodium Azide and 40% glycerol

Research Areas: Cell Biology

Storage & Shipping: Store at -20°C. Avoid repeated freezing and thawing



Immunohistochemistry analysis of paraffin embedded Human brain using 221958(EPB41L2 Antibody) at a dilution of 1/25(Cytoplasm and Cell membrane).



In comparison with the IHC on the left, the same paraffin-embedded Human brain is first treated with the synthetic peptide and then with 221958(Anti-EPB41L2 Antibody) at dilution 1/25.