

## EPCAM (1D5) MOUSE MAB

**Cat.#:** N261399

**Product Name:** Anti-EpCAM (1D5) Mouse Monoclonal Antibody

**Synonyms:** EPCAM; GA733-2; MIS2; M4S1; MIC18; TACSTD1; TROP1; Epithelial cell adhesion molecule; Ep-CAM; Adenocarcinoma-associated antigen; Cell surface glycoprotein Trop-1; Epithelial cell surface antigen; Epithelial glycoprotein; EGP; Epithelial glycoprotein 314; EGP314; hEGP314; KS 1/4 antigen; KSA; Major gastrointestinal tumor-associated protein GA733-2; Tumor-associated calcium signal transducer 1; CD326

**UNIPROT ID:** P16422

**Background:** May act as a physical homophilic interaction molecule between intestinal epithelial cells (IECs) and intraepithelial lymphocytes (IELs) at the mucosal epithelium for providing immunological barrier as a first line of defense against mucosal infection. Plays a role in embryonic stem cells proliferation and differentiation. Up-regulates the expression of FABP5, MYC and cyclins A and E.

**Immunogen:** Purified recombinant EpCAM protein fragments expressed in E.coli.

**Applications:** WB,IP

**Recommended Dilutions:** WB: 1/500-1/1000 IP: 1/20

**Host Species:** Mouse

**Clonality:** Mouse Monoclonal

**Clone ID:** 1D5-B6-B10

**MW:** Calculated MW: 35 kDa; Observed MW: 39 kDa

**Isotype:** IgG1

**Purification:** Affinity Purified

**Species Reactivity:** Human

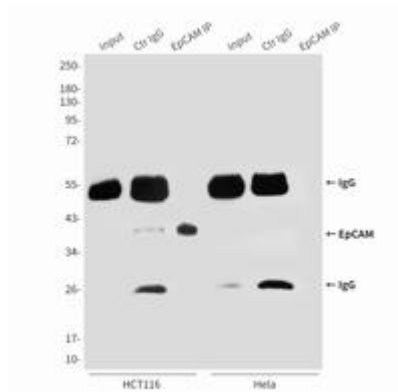
**Conjugation:** Unconjugated

**Modification:** Unmodified

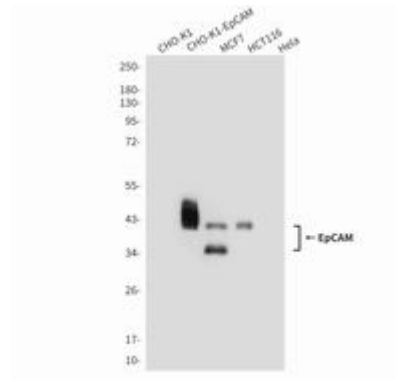
**Constituents:** PBS (without Mg<sup>2+</sup> and Ca<sup>2+</sup>), pH 7.3 containing 50% glycerol, 0.5% BSA and 0.02% sodium azide

**Research Areas:** Tags & Cell Markers

**Storage & Shipping:** Store at -20°C. Avoid repeated freezing and thawing



Immunoprecipitation analysis of EpCAM (1D5) in HCT116 and HeLa lysates using EpCAM antibody.



Western blot analysis of EpCAM (1D5) in CHOKCHO-K1 transfected by FlagEpCAM, MCF-7 (EpCAM positive), HCT116 (EpCAM positive), and HeLa (EpCAM negative) lysates using EpCAM (1D5) antibody.