

## EPDR1 RABBIT PAB

**Cat.#:** S217404

**Product Name:** Anti-EPDR1 Rabbit Polyclonal Antibody

**Synonyms:** EPDR; UCC1; MERP1; MERP-1

**UNIPROT ID:** Q9UM22 (Gene Accession - BC018299 )

**Background:** The protein encoded by this gene is a type II transmembrane protein that is similar to two families of cell adhesion molecules, the protocadherins and ependymins. This protein may play a role in calcium-dependent cell adhesion. This protein is glycosylated, and the orthologous mouse protein is localized to the lysosome. Alternative splicing results in multiple transcript variants. A related pseudogene has been identified on chromosome 8.

**Immunogen:** Fusion protein of human EPDR1

**Applications:** ELISA, WB, IHC

**Recommended Dilutions:** IHC: 50-200;WB: 500-2000;ELISA: 5000-10000

**Host Species:** Rabbit

**Clonality:** Rabbit Polyclonal

**Isotype:** Immunogen-specific rabbit IgG

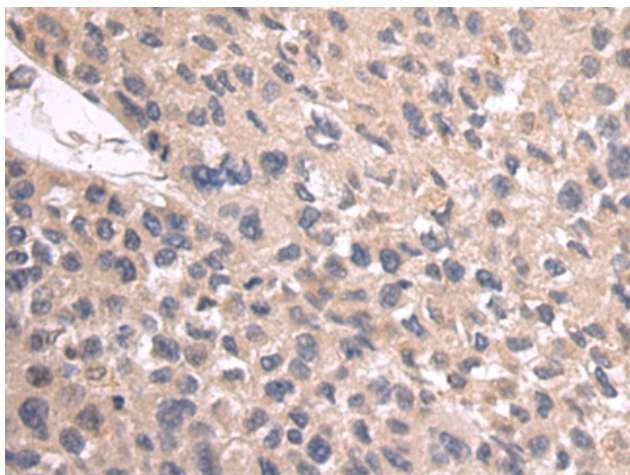
**Purification:** Antigen affinity purification

**Species Reactivity:** Human, Mouse, Rat

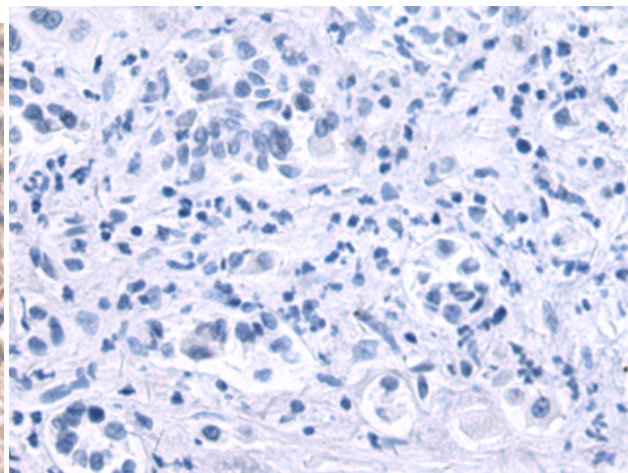
**Constituents:** PBS (without Mg<sup>2+</sup> and Ca<sup>2+</sup>), pH 7.4, 150 mM NaCl, 0.05% Sodium Azide and 40% glycerol

**Research Areas:** Signal Transduction

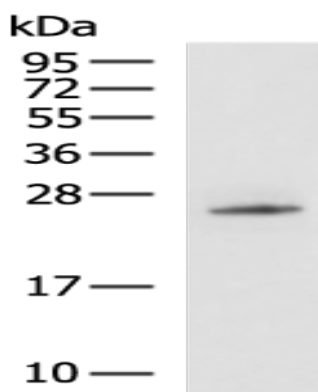
**Storage & Shipping:** Store at -20°C. Avoid repeated freezing and thawing



Immunohistochemistry analysis of paraffin embedded Human liver cancer tissue using 217404(EPDR1 Antibody) at a dilution of 1/55(Cytoplasm).



In comparison with the IHC on the left, the same paraffin-embedded Human liver cancer tissue is first treated with the fusion protein and then with 217404(Anti-EPDR1 Antibody) at dilution 1/55.



Gel: 12%SDS-PAGE, Lysate: 40  $\mu$ g;  
Lane: Mouse skeletal muscle tissue lysate;  
Primary antibody: 217404(EPDR1 Antibody) at dilution 1/400;  
Secondary antibody: HRP-conjugated Goat anti rabbit IgG at 1/5000 dilution;  
Exposure time: 20 seconds