

## EPHA6 RABBIT PAB

**Cat.#:** S214116

**Product Name:** Anti-EPHA6 Rabbit Polyclonal Antibody

**Synonyms:** EHK2; EK12; EPA6; EHK-2; HEK12; PRO57066

**UNIPROT ID:** Q9UF33 (Gene Accession - NP\_775926 )

**Background:** Predicted to enable transmembrane-ephrin receptor activity. Predicted to be involved in axon guidance; positive regulation of kinase activity; and transmembrane receptor protein tyrosine kinase signaling pathway. Located in nucleoplasm. [provided by Alliance of Genome Resources, Apr 2022]

**Immunogen:** Synthetic peptide of human EPHA6

**Applications:** ELISA, IHC

**Recommended Dilutions:** IHC: 50-200; ELISA: 5000-10000

**Host Species:** Rabbit

**Clonality:** Rabbit Polyclonal

**Isotype:** Immunogen-specific rabbit IgG

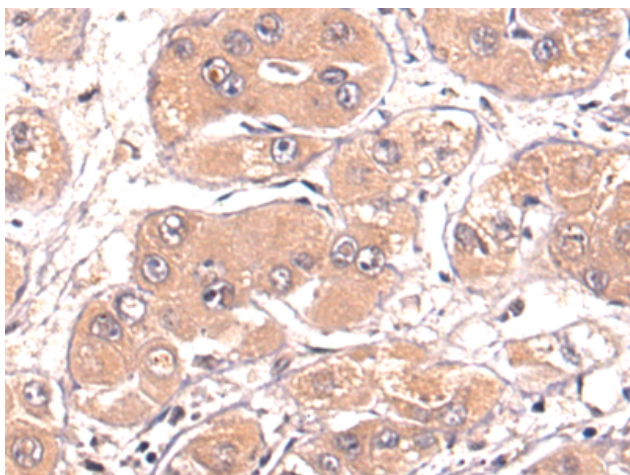
**Purification:** Antigen affinity purification

**Species Reactivity:** Human, Mouse, Rat

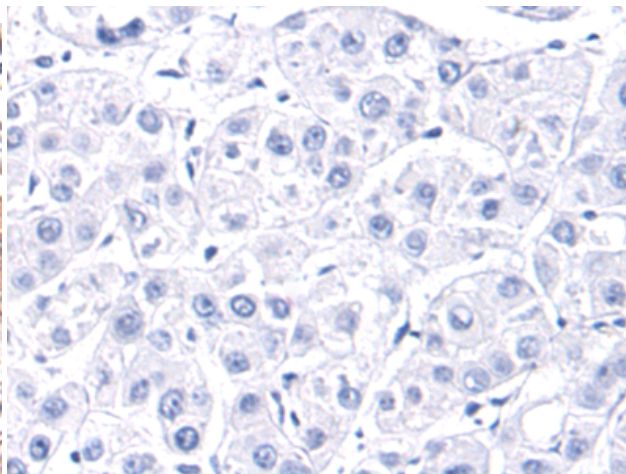
**Constituents:** PBS (without Mg<sup>2+</sup> and Ca<sup>2+</sup>), pH 7.4, 150 mM NaCl, 0.05% Sodium Azide and 40% glycerol

**Research Areas:** Neuroscience, Cardiovascular

**Storage & Shipping:** Store at -20°C. Avoid repeated freezing and thawing



Immunohistochemistry analysis of paraffin embedded Human tonsil tissue using 214116(EPHA6 Antibody) at a dilution of 1/50(Nucleus).



In comparison with the IHC on the left, the same paraffin-embedded Human tonsil tissue is first treated with the synthetic peptide and then with 214116(Anti-EPHA6 Antibody) at dilution 1/50.