

EPHRIN RECEPTOR B1 RABBIT MAB

Cat.#: N263316

Product Name: Anti-Ephrin Receptor B1 Rabbit Monoclonal Antibody

Synonyms: EPHB1; ELK; EPHT2; HEK6; NET; Ephrin type-B receptor 1; ELK; EPH tyrosine kinase 2; EPH-like kinase 6; EK6; hEK6; Neuronally-expressed EPH-related tyrosine kinase; NET; Tyrosine-protein kinase receptor EPH-2

UNIPROT ID: P54762

Background: Receptor for members of the ephrin-B family. Binds to ephrin-B1, -B2 and -B3. Binding with the guidance cue ephrin-B2 at the optic chiasm midline redirect ventrotemporal (VT) retinal ganglion cells (RGCs) axons ipsilaterally. May be involved in cell-cell interactions in the nervous system.

Immunogen: A synthetic peptide of human Eph receptor B1/NET

Applications: WB,IP

Recommended Dilutions: WB: 1/500-1/1000 IP: 1/20

Host Species: Rabbit

Clonality: Rabbit Monoclonal

Clone ID: R03-7A7

MW: Calculated MW: 110 kDa; Observed MW: 135 kDa

Isotype: IgG

Purification: Affinity Purified

Species Reactivity: Human

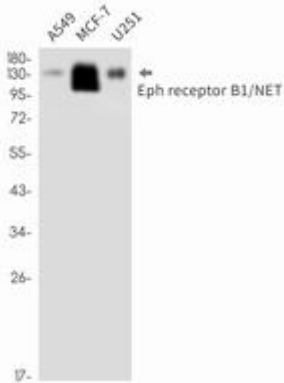
Conjugation: Unconjugated

Modification: Unmodified

Constituents: PBS (without Mg²⁺ and Ca²⁺), pH 7.3 containing 50% glycerol, 0.5% BSA and 0.02% sodium azide

Research Areas: Neuroscience EPHrin Receptor

Storage & Shipping: Store at -20°C. Avoid repeated freezing and thawing



Western blot analysis of Eph receptor B1/NET in A549, MCF-7, U251 lysates using Ephrin Receptor B1 antibody.