

EPIGEN RABBIT PAB

Cat.#: N225129

Product Name: Anti-Epigen Rabbit pAb

Synonyms: EPGN; Epigen; Epithelial mitogen; EPG

UNIPROT ID: Q6UW88

Background: Promotes the growth of epithelial cells.

Immunogen: The antiserum was produced against synthesized peptide derived from the Internal region of human EPGN. AA range:11-60

Applications: WB,ELISA

Recommended Dilutions: WB: 1/500-1/1000 ELISA: 1/10000

Host Species: Rabbit

Clonality: Rabbit Polyclonal

Clone ID: -

MW: Calculated MW: 17 kDa; Observed MW: 17 kDa

Isotype: IgG

Purification: Affinity Purified

Species Reactivity: Human

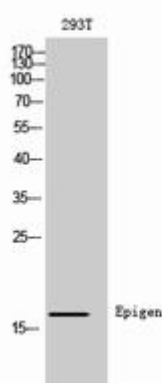
Conjugation: Unconjugated

Modification: Unmodified

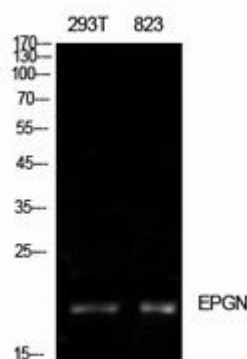
Constituents: PBS (without Mg²⁺ and Ca²⁺), pH 7.3 containing 50% glycerol, 0.5% BSA and 0.02% sodium azide

Research Areas: Signal Transduction

Storage & Shipping: Store at -20°C. Avoid repeated freezing and thawing



Western blot analysis of Epigen in 293T lysates using Epigen antibody.



Western blot analysis of Epigen in 293T, 823 lysates using Epigen antibody.



Product Description

Pioneering GTPase and Oncogene Product Development since 2010
