

EPSILON TUBULIN (7D3) MOUSE MAB

Cat.#: N261331

Product Name: Anti-epsilon Tubulin (7D3) Mouse Monoclonal Antibody

Synonyms: FLJ22589; TUBE1; tubulin epsilon 1; ϵ tubulin

UNIPROT ID: Q9UJT0

Background: This gene encodes a member of the tubulin superfamily. This protein localizes to the centriolar sub-distal appendages that are associated with the older of the two centrioles after centrosome duplication. This protein plays a central role in organization of the microtubules during centriole duplication. A pseudogene of this gene is found on chromosome 5.

Immunogen: Synthetic peptide conjugated to KLH.

Applications: IHC-P

Recommended Dilutions: IHC: 1/50-1/100

Host Species: Mouse

Clonality: Mouse Monoclonal

Clone ID: 7D3-7D4-9B2

MW: -

Isotype: IgG1

Purification: Affinity Purified

Species Reactivity: Human,Rat,Mouse

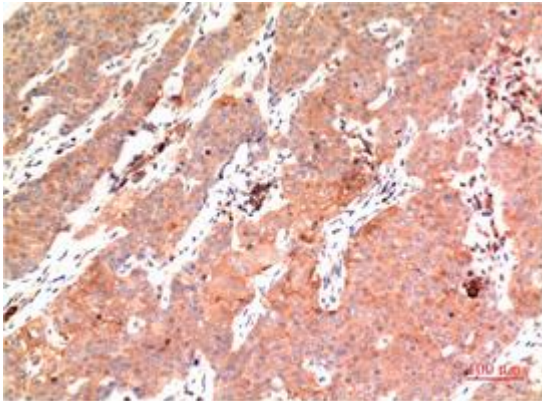
Conjugation: Unconjugated

Modification: Unmodified

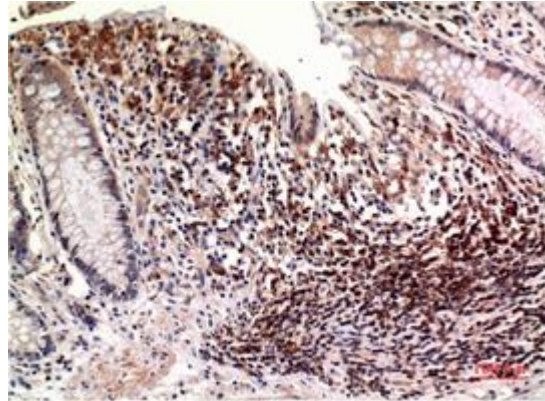
Constituents: PBS (without Mg²⁺ and Ca²⁺), pH 7.3 containing 50% glycerol, 0.5% BSA and 0.02% sodium azide

Research Areas: Signal Transduction

Storage & Shipping: Store at -20°C. Avoid repeated freezing and thawing



Immunohistochemical analysis of paraffin-embedded Human tonsils using epsilon Tubulin (7D3) antibody. High-pressure and temperature Sodium Citrate pH 6.0 was used for antigen retrieval.



Immunohistochemistry analysis of paraffin-embedded Human Colon Carcinoma Tissue using epsilon Tubulin (7D3) antibody. High-pressure and temperature Sodium Citrate pH 6.0 was used for antigen retrieval.