

## EPX RABBIT PAB

**Cat.#:** S221482

**Product Name:** Anti-EPX Rabbit Polyclonal Antibody

**Synonyms:** EPO; EPP; EPXD; EPX-PEN

**UNIPROT ID:** P11678 (Gene Accession - NP\_000493 )

**Background:** This gene is a member of the peroxidase gene family and is expressed in eosinophils. The encoded precursor protein is processed into covalently attached heavy and light chains to form the mature enzyme, which functions as an oxidant. The enzyme is released at sites of parasitic infection or allergen stimulation to mediate lysis of protozoa or parasitic worms. The gene is found in a cluster of three peroxidase genes at chromosome 17q23. Mutations in this gene result in eosinophil peroxidase deficiency.

**Immunogen:** Synthetic peptide of human EPX

**Applications:** ELISA, IHC

**Recommended Dilutions:** IHC: 20-100; ELISA: 500-1000

**Host Species:** Rabbit

**Clonality:** Rabbit Polyclonal

**Isotype:** Immunogen-specific rabbit IgG

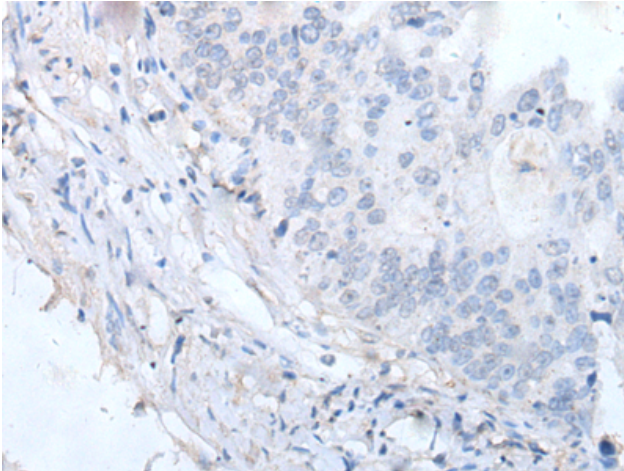
**Purification:** Antigen affinity purification

**Species Reactivity:** Human

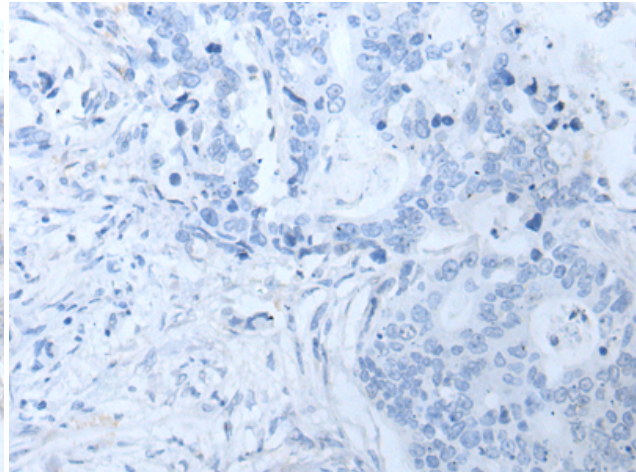
**Constituents:** PBS (without Mg<sup>2+</sup> and Ca<sup>2+</sup>), pH 7.4, 150 mM NaCl, 0.05% Sodium Azide and 40% glycerol

**Research Areas:** Cancer, Stem Cells

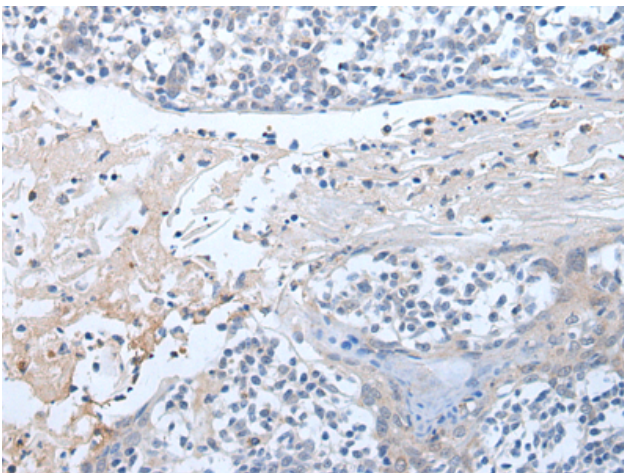
**Storage & Shipping:** Store at -20°C. Avoid repeated freezing and thawing



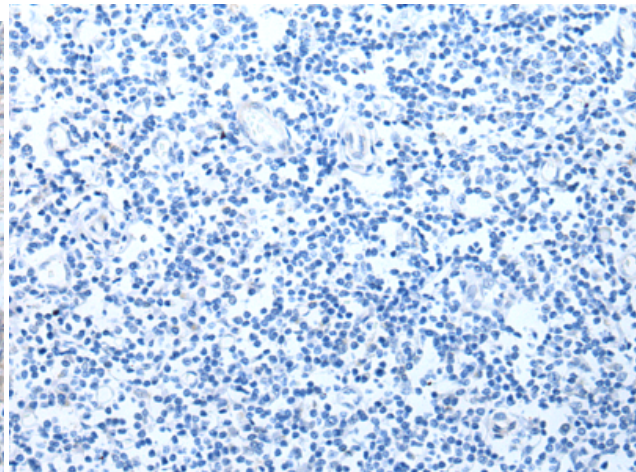
Immunohistochemistry analysis of paraffin embedded Human colorectal cancer tissue using 221482(EPX Antibody) at a dilution of 1/20(Cytoplasm).



In comparison with the IHC on the left, the same paraffin-embedded Human colorectal cancer tissue is first treated with the synthetic peptide and then with 221482(Anti-EPX Antibody) at dilution 1/20.



The image on the left is immunohistochemistry of paraffin-embedded Human tonsil tissue using 221482(Anti-EPX Antibody) at a dilution of 1/20.



In comparison with the IHC on the left, the same paraffin-embedded Human tonsil tissue is first treated with synthetic peptide and then with D263094(Anti-EPX Antibody) at dilution 1/20.