

ERCC1 RABBIT MAB

Cat.#: N262188

Product Name: Anti-ERCC1 Rabbit Monoclonal Antibody

Synonyms: ERCC1; DNA excision repair protein ERCC-1

UNIPROT ID: P07992

Background: DNA repair systems operate in all living cells to manage a variety of DNA lesions. Nucleotide excision repair (NER) is implemented in cases where bulky helix-distorting lesions occur, such as those brought about by UV and certain chemicals. Research studies have shown that expression of ERCC1 is related to survival rate and response to chemotherapeutic drugs in several human cancers including non-small cell lung cancer (NSCLC).

Immunogen: A synthetic peptide of human ERCC1

Applications: WB, ICC/IF

Recommended Dilutions: WB: 1/500-1/1000 IF: 1/50-1/200

Host Species: Rabbit

Clonality: Rabbit Monoclonal

Clone ID: R08-7E3

MW: Calculated MW: 33 kDa; Observed MW: 39 kDa

Isotype: IgG

Purification: Affinity Purified

Species Reactivity: Human, Mouse

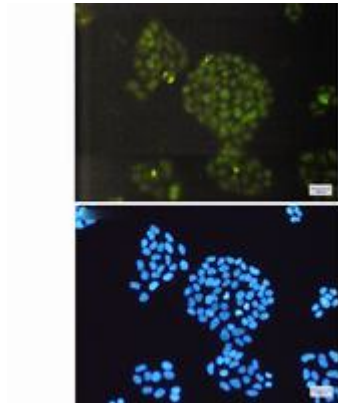
Conjugation: Unconjugated

Modification: Unmodified

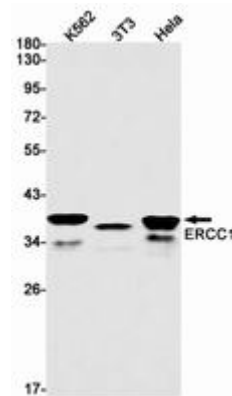
Constituents: PBS (without Mg²⁺ and Ca²⁺), pH 7.3 containing 50% glycerol, 0.5% BSA and 0.02% sodium azide

Research Areas: Epigenetics and Nuclear Signaling

Storage & Shipping: Store at -20°C. Avoid repeated freezing and thawing



Immunocytochemistry analysis of ERCC1 (green) in HeLa using ERCC1 antibody, and DAPI (blue)



Western blot analysis of ERCC1 in K562, 3T3, HeLa lysates using ERCC1 antibody.