

## ERCC8 RABBIT MAB

**Cat.#:** N263322

**Product Name:** Anti-ERCC8 Rabbit Monoclonal Antibody

**Synonyms:** CKN1; CSA; ERCC8

**UNIPROT ID:** Q13216

**Background:** Substrate-recognition component of the CSA complex, a DCX (DDB1-CUL4-X-box) E3 ubiquitin-protein ligase complex, involved in transcription-coupled nucleotide excision repair.

**Immunogen:** A synthetic peptide of human ERCC8

**Applications:** WB,IP

**Recommended Dilutions:** WB: 1/500-1/1000 IP: 1/20

**Host Species:** Rabbit

**Clonality:** Rabbit Monoclonal

**Clone ID:** R03-2F3

**MW:** Calculated MW: 44 kDa; Observed MW: 44 kDa

**Isotype:** IgG

**Purification:** Affinity Purified

**Species Reactivity:** Human

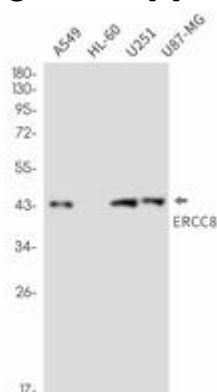
**Conjugation:** Unconjugated

**Modification:** Unmodified

**Constituents:** PBS (without Mg<sup>2+</sup> and Ca<sup>2+</sup>), pH 7.3 containing 50% glycerol, 0.5% BSA and 0.02% sodium azide

**Research Areas:** -

**Storage & Shipping:** Store at -20°C. Avoid repeated freezing and thawing



Western blot analysis of ERCC8 in A549, HL-60, U251, U87-MG lysates using ERCC8 antibody.



# Product Description

Pioneering GTPase and Oncogene Product Development since 2010

---