

## ERGIC3 RABBIT PAB

**Cat.#:** S218668

**Product Name:** Anti-ERGIC3 Rabbit Polyclonal Antibody

**Synonyms:** Erv46; CGI-54; C2orf47; PRO0989; C20orf47; NY-BR-84; SDBCAG84; dJ477O4.2

**UNIPROT ID:** Q9Y282 (Gene Accession - BC014014 )

**Background:** Possible role in transport between endoplasmic reticulum and Golgi.

**Immunogen:** Fusion protein of human ERGIC3

**Applications:** ELISA, IHC

**Recommended Dilutions:** IHC: 30-150; ELISA: 5000-10000

**Host Species:** Rabbit

**Clonality:** Rabbit Polyclonal

**Isotype:** Immunogen-specific rabbit IgG

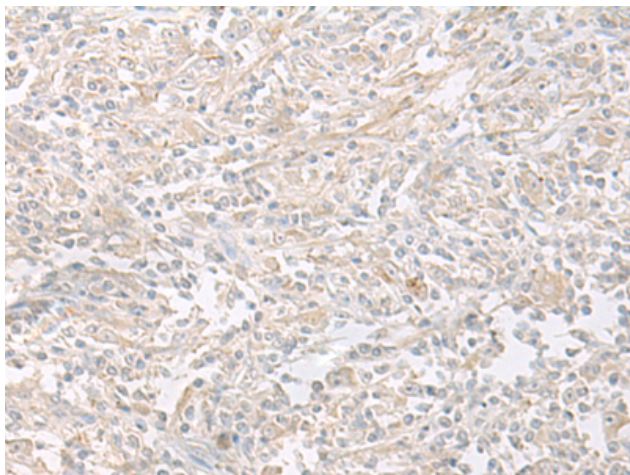
**Purification:** Antigen affinity purification

**Species Reactivity:** Human, Mouse

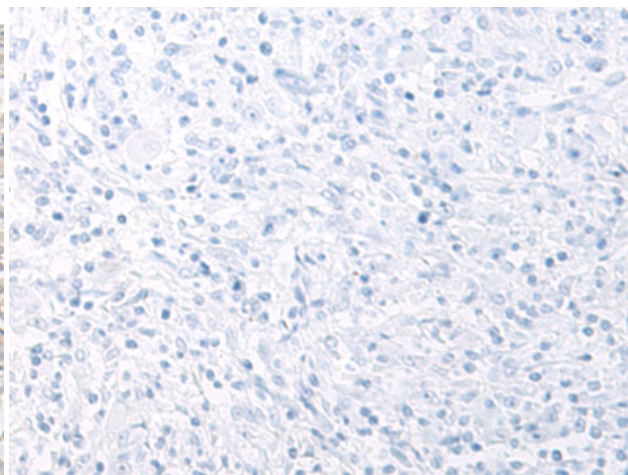
**Constituents:** PBS (without Mg<sup>2+</sup> and Ca<sup>2+</sup>), pH 7.4, 150 mM NaCl, 0.05% Sodium Azide and 40% glycerol

**Research Areas:** Signal Transduction

**Storage & Shipping:** Store at -20°C. Avoid repeated freezing and thawing



Immunohistochemistry analysis of paraffin embedded Human liver cancer tissue using 218668(ERGIC3 Antibody) at a dilution of 1/35(Cytoplasm).



In comparison with the IHC on the left, the same paraffin-embedded Human liver cancer tissue is first treated with the fusion protein and then with 218668(Anti-ERGIC3 Antibody) at dilution 1/35.