

## ERK2 RABBIT PAB

**Cat.#:** N225558

**Product Name:** Anti-ERK2 Rabbit pAb

**Synonyms:** ERK; p38; p40; p41; ERT1; MAPK2; PRKMI; P42MAPK; p41mapk; MAPK

**UNIPROT ID:** P28482

**Background:** Act as an integration point for multiple biochemical signals, and are involved in a wide variety of cellular processes such as proliferation, differentiation, transcription regulation and development. The activation of ERK2 requires its phosphorylation by upstream kinases. ERK2 is located in the cytoplasm of resting cells and translocates into the nucleus upon extracellular stimuli by active transport of a dimer. ERK2 is essential for placental development and ERK2 in the trophoblast compartment may be indispensable for the vascularization of the labyrinth.

**Immunogen:** A synthesized peptide derived from human ERK2

**Applications:** WB,IHC-P,ICC/IF,IP,FC

**Recommended Dilutions:** WB: 1/500-1/1000 IHC: 1/50-1/100 IF: 1/50-1/200 IP: 1/20 FC: 1/50-1/100

**Host Species:** Rabbit

**Clonality:** Rabbit Polyclonal

**Clone ID:** -

**MW:** Calculated MW: 41 kDa; Observed MW: 41 kDa

**Isotype:** IgG

**Purification:** Affinity Chromatography

**Species Reactivity:** Human,Mouse,Rat

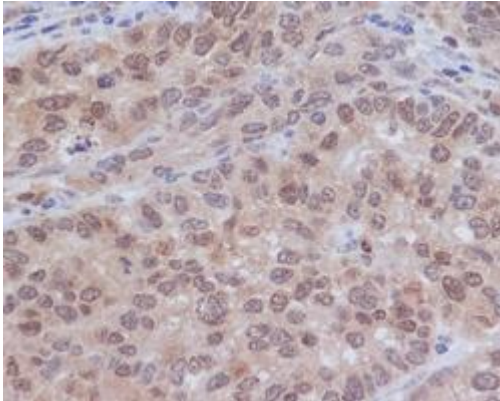
**Conjugation:** Unconjugated

**Modification:** Unmodified

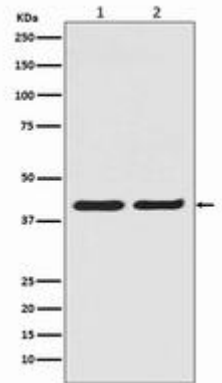
**Constituents:** PBS (without Mg<sup>2+</sup> and Ca<sup>2+</sup>), pH 7.3 containing 50% glycerol, 0.5% BSA and 0.02% sodium azide

**Research Areas:** Neuroscience

**Storage & Shipping:** Store at -20°C. Avoid repeated freezing and thawing



Immunohistochemistry analysis of paraffin-embedded Human gastric adenocarcinoma using ERK2 antibody. High-pressure and temperature Sodium Citrate pH 6.0 was used for antigen retrieval.



Western blot analysis of ERK2 in (1) A431 lysates; (2) HeLa lysates using ERK2 antibody.