

ERLIN1 RABBIT PAB

Cat.#: S219342

Product Name: Anti-ERLIN1 Rabbit Polyclonal Antibody

Synonyms: KE04; KEO4; SPFH1; SPG62; Erlin-1; C10orf69

UNIPROT ID: O75477 (Gene Accession - BC031791)

Background: The protein encoded by this gene is part of a protein complex that mediates degradation of inositol 1,4,5-trisphosphate receptors in the endoplasmic reticulum. The encoded protein also binds cholesterol and regulates the SREBP signaling pathway, which promotes cellular cholesterol homeostasis. Defects in this gene have been associated with spastic paraplegia 62.

Immunogen: Fusion protein of human ERLIN1

Applications: ELISA, WB, IHC

Recommended Dilutions: IHC: 50-200;WB: 500-2000;ELISA: 5000-10000

Host Species: Rabbit

Clonality: Rabbit Polyclonal

Isotype: Immunogen-specific rabbit IgG

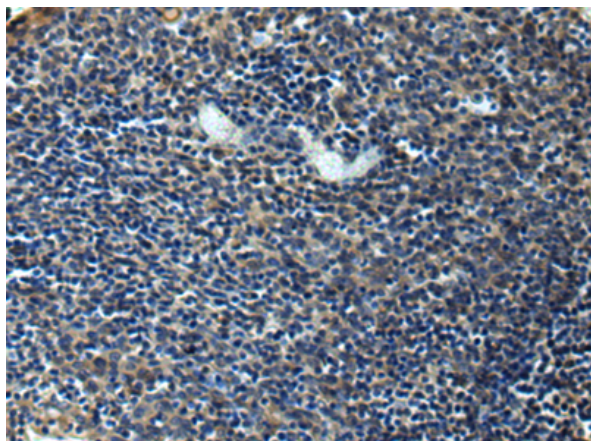
Purification: Antigen affinity purification

Species Reactivity: Human, Mouse, Rat

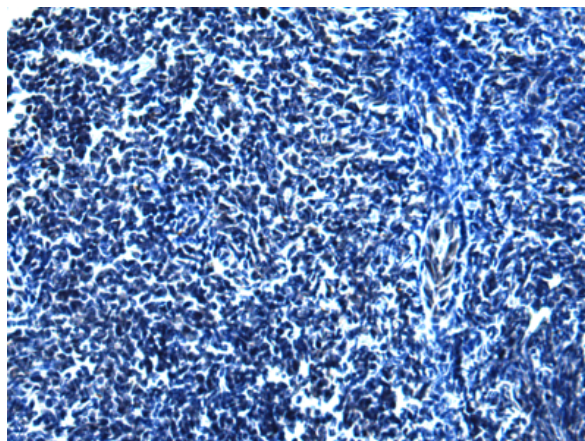
Constituents: PBS (without Mg²⁺ and Ca²⁺), pH 7.4, 150 mM NaCl, 0.05% Sodium Azide and 40% glycerol

Research Areas: Metabolism

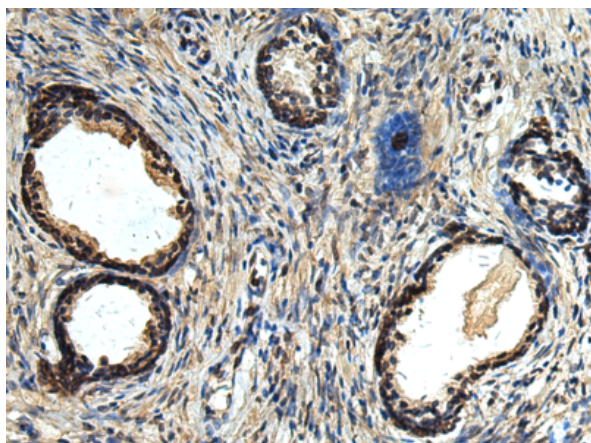
Storage & Shipping: Store at -20°C. Avoid repeated freezing and thawing



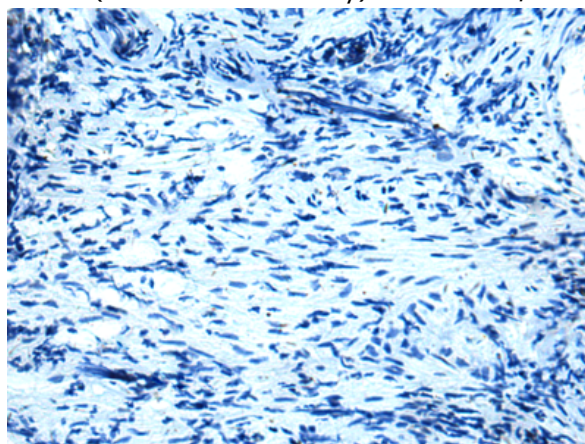
Immunohistochemistry analysis of paraffin embedded Human tonsil tissue using 219342(ERLINI Antibody) at a dilution of 1/50(Cytoplasm).



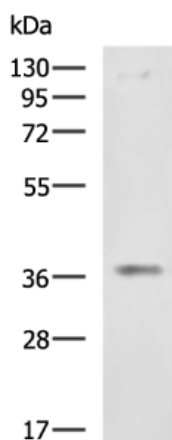
In comparison with the IHC on the left, the same paraffin-embedded Human tonsil tissue is first treated with the fusion protein and then with 219342(Anti-ERLINI Antibody) at dilution 1/50.



The image on the left is immunohistochemistry of paraffin-embedded Human prostate cancer tissue using 219342(Anti-ERLINI Antibody) at a dilution of 1/50.



In comparison with the IHC on the left, the same paraffin-embedded Human prostate cancer tissue is first treated with fusion protein and then with D226477(Anti-ERLINI Antibody) at dilution 1/50.



Gel: 8%SDS-PAGE, Lysate: 40 µg;
 Lane: Rat pancreas tissue lysate;
 Primary antibody: 219342(ERLINI Antibody) at dilution 1/800;
 Secondary antibody: HRP-conjugated Goat anti rabbit IgG at 1/5000 dilution;
 Exposure time: 1 minute



Product Description

Pioneering GTPase and Oncogene Product Development since 2010
