

ERMP1 RABBIT PAB

Cat.#: S218091

Product Name: Anti-ERMP1 Rabbit Polyclonal Antibody

Synonyms: FXNA; KIAA1815; bA207C16.3

UNIPROT ID: Q7Z2K6 (Gene Accession - BC031630)

Background: Within the ovary, required for the organization of somatic cells and oocytes into discrete follicular structures.

Immunogen: Fusion protein of human ERMP1

Applications: ELISA, IHC

Recommended Dilutions: IHC: 25-100; ELISA: 5000-10000

Host Species: Rabbit

Clonality: Rabbit Polyclonal

Isotype: Immunogen-specific rabbit IgG

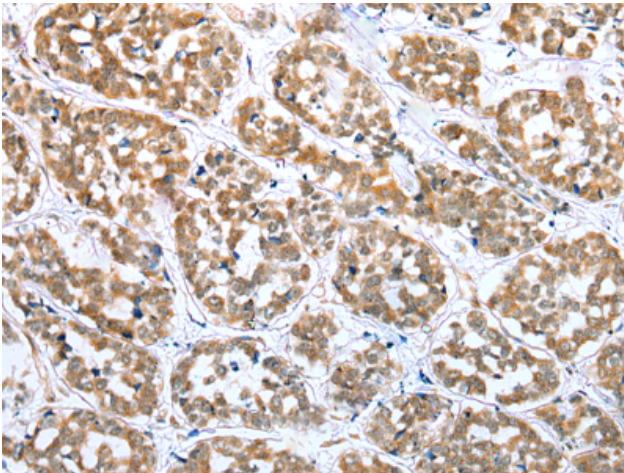
Purification: Antigen affinity purification

Species Reactivity: Human, Mouse, Rat

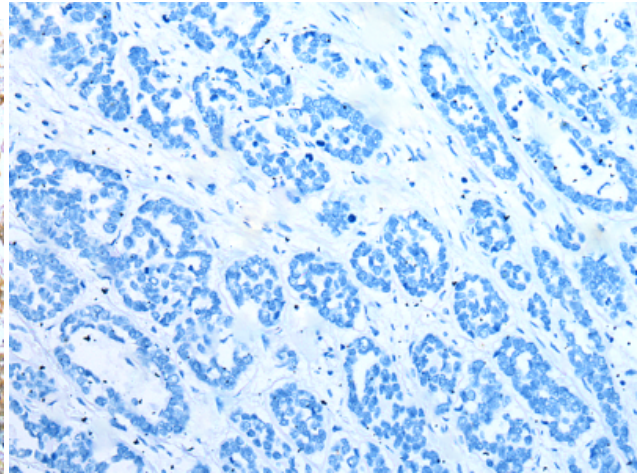
Constituents: PBS (without Mg²⁺ and Ca²⁺), pH 7.4, 150 mM NaCl, 0.05% Sodium Azide and 40% glycerol

Research Areas: Signal Transduction

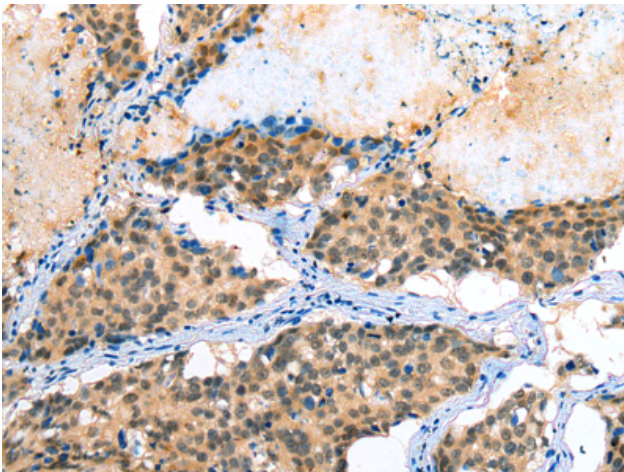
Storage & Shipping: Store at -20°C. Avoid repeated freezing and thawing



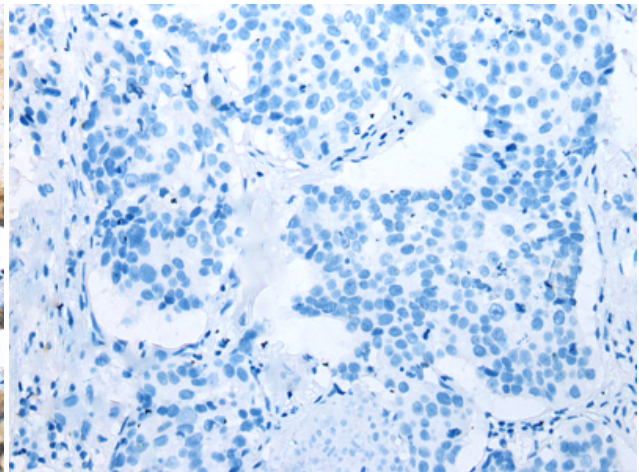
Immunohistochemistry analysis of paraffin embedded Human esophagus cancer tissue using 218091(ERMP1 Antibody) at a dilution of 1/30(Nucleus or Cytoplasm).



In comparison with the IHC on the left, the same paraffin-embedded Human esophagus cancer tissue is first treated with the fusion protein and then with 218091(Anti-ERMP1 Antibody) at dilution 1/30.



The image on the left is immunohistochemistry of paraffin-embedded Human lung cancer tissue using 218091(Anti-ERMP1 Antibody) at a dilution of 1/30.



In comparison with the IHC on the left, the same paraffin-embedded Human lung cancer tissue is first treated with fusion protein and then with D223683(Anti-ERMP1 Antibody) at dilution 1/30.