

ERP27 RABBIT PAB

Cat.#: S218620

Product Name: Anti-ERP27 Rabbit Polyclonal Antibody

Synonyms: PDIA8; C12orf46

UNIPROT ID: Q96DN0 (Gene Accession - BC030218)

Background: ERP27 is a noncatalytic member of the protein disulfide isomerase (PDI; see MIM 608012) family of endoplasmic reticulum (ER) proteins (Alanen et al., 2006 [PubMed 16940051]).

Immunogen: Fusion protein of human ERP27

Applications: ELISA, IHC

Recommended Dilutions: IHC: 40–200; ELISA: 5000–10000

Host Species: Rabbit

Clonality: Rabbit Polyclonal

Isotype: Immunogen-specific rabbit IgG

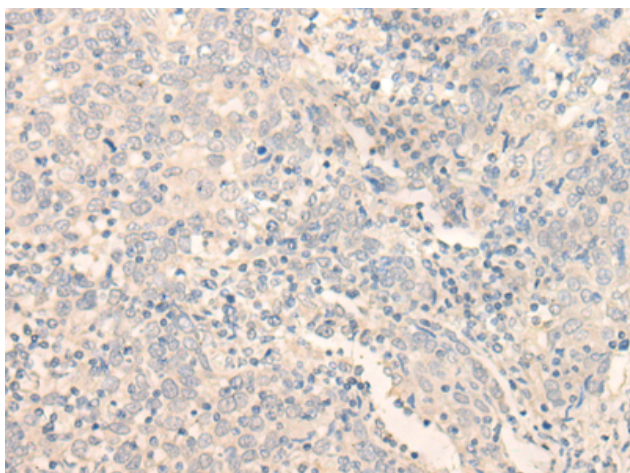
Purification: Antigen affinity purification

Species Reactivity: Human

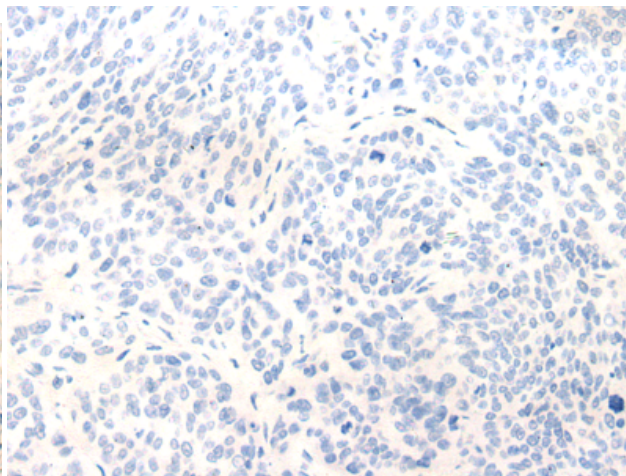
Constituents: PBS (without Mg²⁺ and Ca²⁺), pH 7.4, 150 mM NaCl, 0.05% Sodium Azide and 40% glycerol

Research Areas: Signal Transduction

Storage & Shipping: Store at –20°C. Avoid repeated freezing and thawing



Immunohistochemistry analysis of paraffin embedded Human cervical cancer tissue using 218620(ERP27 Antibody) at a dilution of 1/35(Endoplasmic reticulum lumen).



In comparison with the IHC on the left, the same paraffin-embedded Human cervical cancer tissue is first treated with the fusion protein and then with 218620(Anti-ERP27 Antibody) at dilution 1/35.