

ERRF11 RABBIT PAB

Cat.#: S220713

Product Name: Anti-ERRF11 Rabbit Polyclonal Antibody

Synonyms: MIG6; RALT; MIG-6; GENE-33

UNIPROT ID: Q9UJM3 (Gene Accession - NP_061821)

Background: ERRF11 is a cytoplasmic protein whose expression is upregulated with cell growth. It shares significant homology with the protein product of rat gene-33, which is induced during cell stress and mediates cell signaling.

Immunogen: Synthetic peptide of human ERRF11

Applications: ELISA, WB, IHC

Recommended Dilutions: IHC: 50-100;WB: 500-2000;ELISA: 5000-10000

Host Species: Rabbit

Clonality: Rabbit Polyclonal

Isotype: Immunogen-specific rabbit IgG

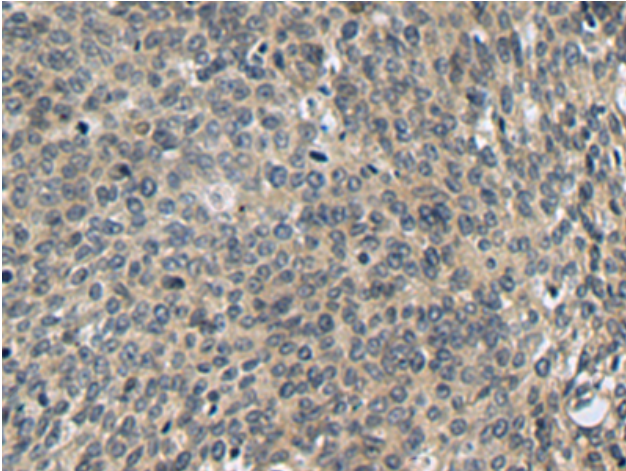
Purification: Antigen affinity purification

Species Reactivity: Human, Mouse

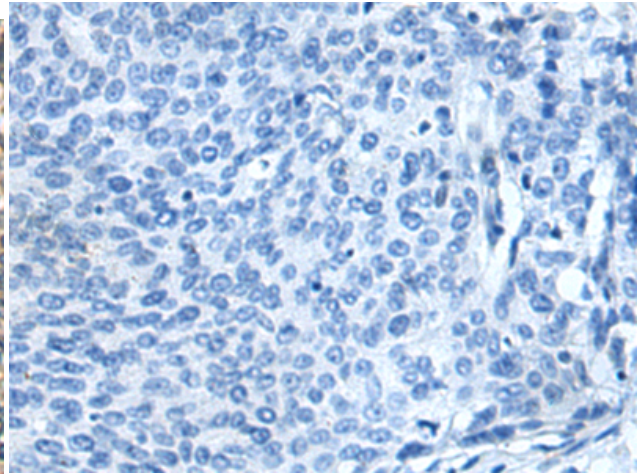
Constituents: PBS (without Mg²⁺ and Ca²⁺), pH 7.4, 150 mM NaCl, 0.05% Sodium Azide and 40% glycerol

Research Areas: Signal Transduction, Cancer, Cardiovascular

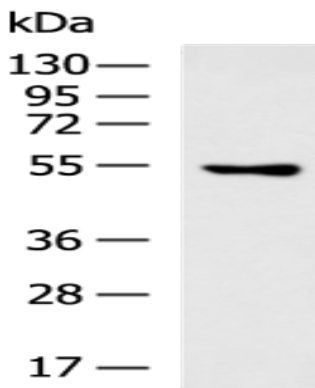
Storage & Shipping: Store at -20°C. Avoid repeated freezing and thawing



Immunohistochemistry analysis of paraffin embedded Human cervical cancer tissue using 220713(ERFII Antibody) at a dilution of 1/40(Cytoplasm).



In comparison with the IHC on the left, the same paraffin-embedded Human cervical cancer tissue is first treated with the synthetic peptide and then with 220713(Anti-ERFII Antibody) at dilution 1/40.



Gel: 8%SDS-PAGE, Lysate: 40 μ g;
Lane: Mouse pancreas tissue lysate;
Primary antibody: 220713(ERFII Antibody) at dilution 1/500;
Secondary antibody: HRP-conjugated Goat anti rabbit IgG at 1/5000 dilution;
Exposure time: 1 minute