

ERVW-1 RABBIT PAB

Cat.#: S220988

Product Name: Anti-ERVW-1 Rabbit Polyclonal Antibody

Synonyms: ENV; ENVW; HERVW; ERVWE1; HERV7Q; HERV-7q; HERVWENV; HERV-W-ENV

UNIPROT ID: Q9UQF0 (Gene Accession - NP_055405)

Background: Many different human endogenous retrovirus (HERV) families are expressed in normal placental tissue at high levels, suggesting that HERVs are functionally important in reproduction. This gene is part of an HERV provirus on chromosome 7 that has inactivating mutations in the gag and pol genes. This gene is the envelope glycoprotein gene which appears to have been selectively preserved. The gene's protein product is expressed in the placental syncytiotrophoblast and is involved in fusion of the cytotrophoblast cells to form the syncytial layer of the placenta.

Immunogen: Synthetic peptide of human ERVW-1

Applications: ELISA, IHC

Recommended Dilutions: IHC: 25-100; ELISA: 2000-5000

Host Species: Rabbit

Clonality: Rabbit Polyclonal

Isotype: Immunogen-specific rabbit IgG

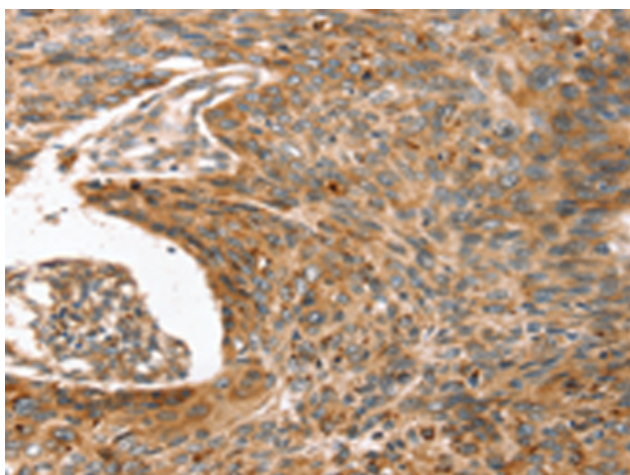
Purification: Antigen affinity purification

Species Reactivity: Human

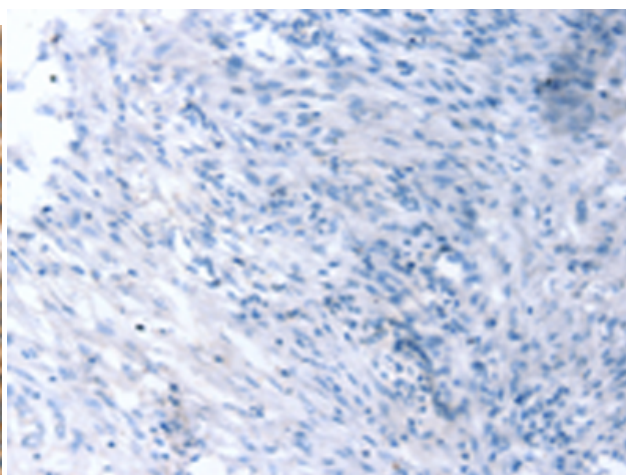
Constituents: PBS (without Mg²⁺ and Ca²⁺), pH 7.4, 150 mM NaCl, 0.05% Sodium Azide and 40% glycerol

Research Areas: Cell Biology, Developmental Biology

Storage & Shipping: Store at -20°C. Avoid repeated freezing and thawing



Immunohistochemistry analysis of paraffin embedded Human esophagus cancer tissue using 220988(ERVW-1 Antibody) at a dilution of 1/45(Cytoplasm and Cell membrane).



In comparison with the IHC on the left, the same paraffin-embedded Human esophagus cancer tissue is first treated with the synthetic peptide and then with 220988(Anti-ERVW-1 Antibody) at dilution 1/45.