

## ESCO1 RABBIT PAB

**Cat.#:** S215695

**Product Name:** Anti-ESCO1 Rabbit Polyclonal Antibody

**Synonyms:** CTF; ECO1; EFO1; ESO1; A930014I12Rik

**UNIPROT ID:** Q5FWF5 (Gene Accession - NP\_443143 )

**Background:** ESCO1 belongs to a conserved family of acetyltransferases involved in sister chromatid cohesion (Hou and Zou, 2005 [PubMed 15958495]).

**Immunogen:** Synthetic peptide of human ESCO1

**Applications:** ELISA, IHC

**Recommended Dilutions:** IHC: 20-100; ELISA: 5000-10000

**Host Species:** Rabbit

**Clonality:** Rabbit Polyclonal

**Isotype:** Immunogen-specific rabbit IgG

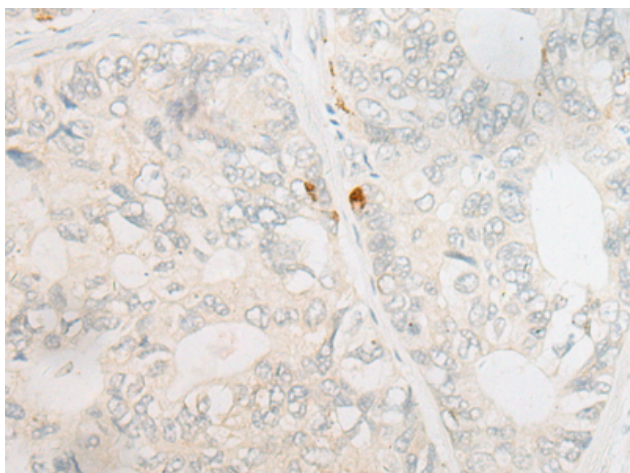
**Purification:** Antigen affinity purification

**Species Reactivity:** Human

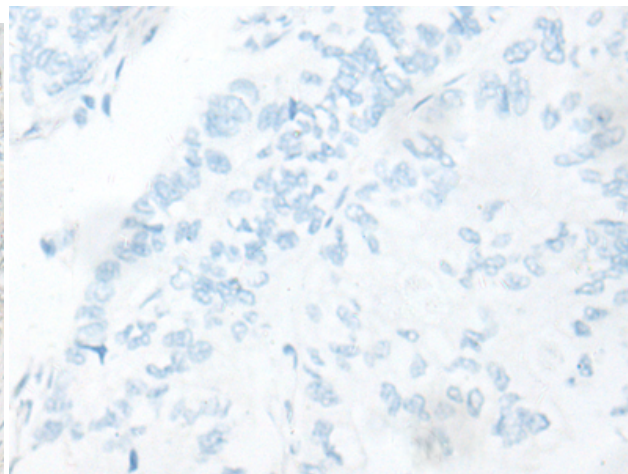
**Constituents:** PBS (without Mg<sup>2+</sup> and Ca<sup>2+</sup>), pH 7.4, 150 mM NaCl, 0.05% Sodium Azide and 40% glycerol

**Research Areas:** Epigenetics and Nuclear Signaling

**Storage & Shipping:** Store at -20°C. Avoid repeated freezing and thawing



Immunohistochemistry analysis of paraffin embedded Human gastric cancer tissue using 215695(ESCO1 Antibody) at a dilution of 1/20(Cytoplasm and Nucleus).



In comparison with the IHC on the left, the same paraffin-embedded Human gastric cancer tissue is first treated with the synthetic peptide and then with 215695(Anti-ESCO1 Antibody) at dilution 1/20.