

## ESR1 RABBIT PAB

**Cat.#:** S219763

**Product Name:** Anti-ESR1 Rabbit Polyclonal Antibody

**Synonyms:** ER, ESR, Era, ESRA, NR3A1

**UNIPROT ID:** P03372 (Gene Accession - NP\_000116 )

**Background:** This gene encodes an estrogen receptor, a ligand-activated transcription factor composed of several domains important for hormone binding, DNA binding, and activation of transcription. The protein localizes to the nucleus where it may form a homodimer or a heterodimer with estrogen receptor 2. Estrogen and its receptors are essential for sexual development and reproductive function, but also play a role in other tissues such as bone. Estrogen receptors are also involved in pathological processes including breast cancer, endometrial cancer, and osteoporosis. Alternative splicing results in several transcript variants, which differ in their 5' UTRs and use different promoters.

**Immunogen:** Synthetic peptide of human ESR1

**Applications:** ELISA, IHC

**Recommended Dilutions:** IHC: 100-300; ELISA: 1000-10000

**Host Species:** Rabbit

**Clonality:** Rabbit Polyclonal

**Isotype:** Immunogen-specific rabbit IgG

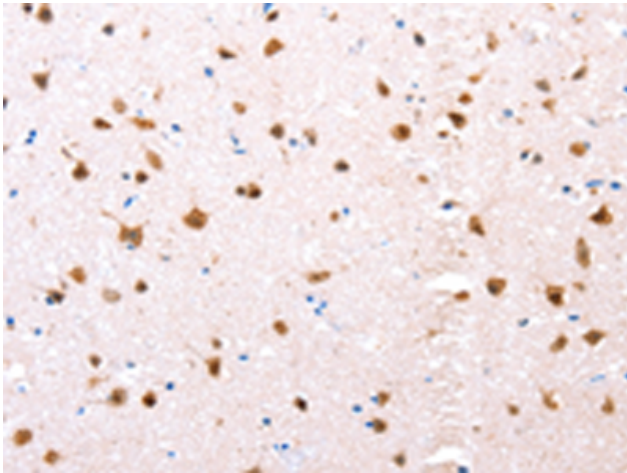
**Purification:** Antigen affinity purification

**Species Reactivity:** Human, Mouse, Rat

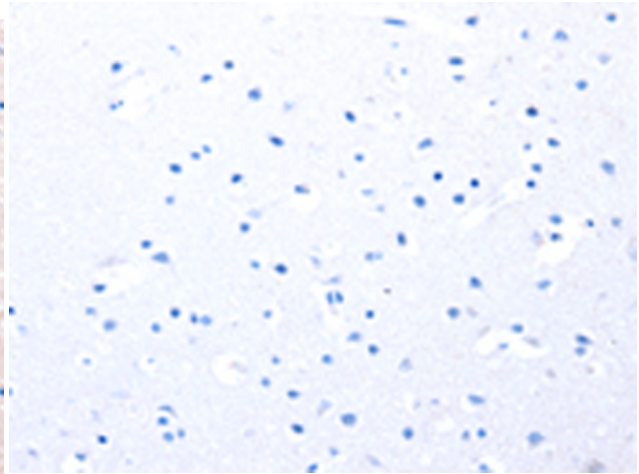
**Constituents:** PBS (without Mg<sup>2+</sup> and Ca<sup>2+</sup>), pH 7.4, 150 mM NaCl, 0.05% Sodium Azide and 40% glycerol

**Research Areas:** Signal Transduction, Epigenetics and Nuclear Signaling, Neuroscience

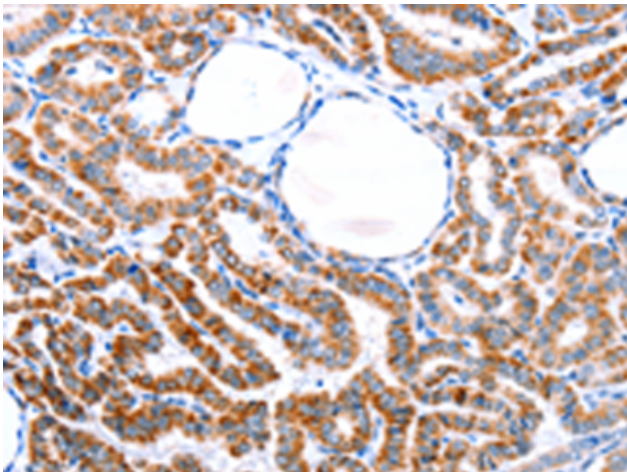
**Storage & Shipping:** Store at -20°C. Avoid repeated freezing and thawing



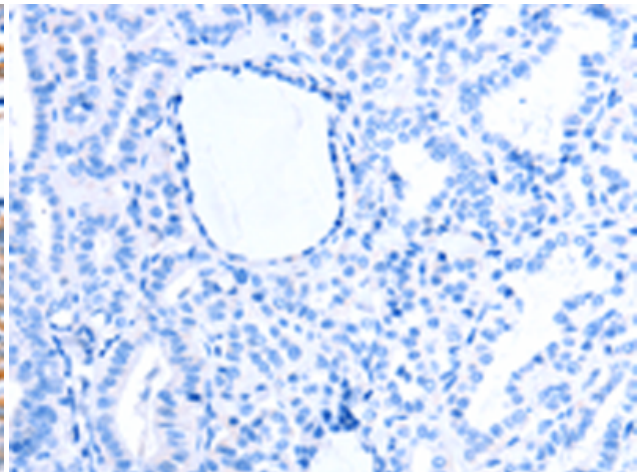
Immunohistochemistry analysis of paraffin embedded Human brain tissue using 219763(ESR1 Antibody) at a dilution of 1/76(Cytoplasm, Nucleus).



In comparison with the IHC on the left, the same paraffin-embedded Human brain tissue is first treated with the synthetic peptide and then with 219763(Anti-ESR1 Antibody) at dilution 1/76.



The image on the left is immunohistochemistry of paraffin-embedded Human thyroid cancer tissue using 219763(Anti-ESR1 Antibody) at a dilution of 1/76.



In comparison with the IHC on the left, the same paraffin-embedded Human thyroid cancer tissue is first treated with synthetic peptide and then with D260314(Anti-ESR1 Antibody) at dilution 1/76.