

## ESRP2 RABBIT PAB

**Cat.#:** S221980

**Product Name:** Anti-ESRP2 Rabbit Polyclonal Antibody

**Synonyms:** RBM35B

**UNIPROT ID:** Q9H6T0 (Gene Accession - NP\_079215 )

**Background:** ESRP2 is an epithelial cell-type-specific splicing regulator (Warzecha et al., 2009 [PubMed 19285943]).

**Immunogen:** Synthetic peptide of human ESRP2

**Applications:** ELISA, IHC

**Recommended Dilutions:** IHC: 50–300; ELISA: 5000–10000

**Host Species:** Rabbit

**Clonality:** Rabbit Polyclonal

**Isotype:** Immunogen-specific rabbit IgG

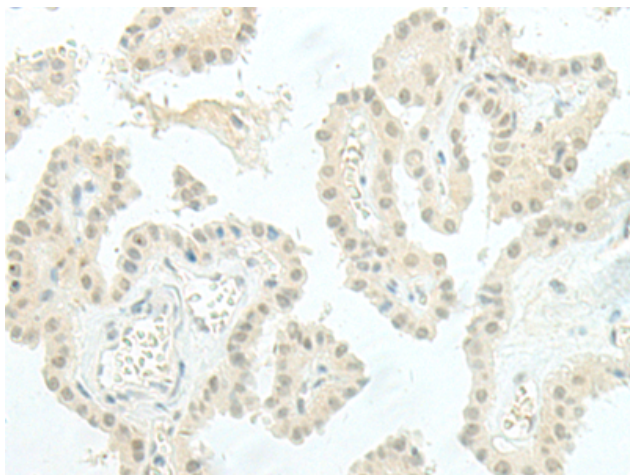
**Purification:** Antigen affinity purification

**Species Reactivity:** Human, Mouse, Rat

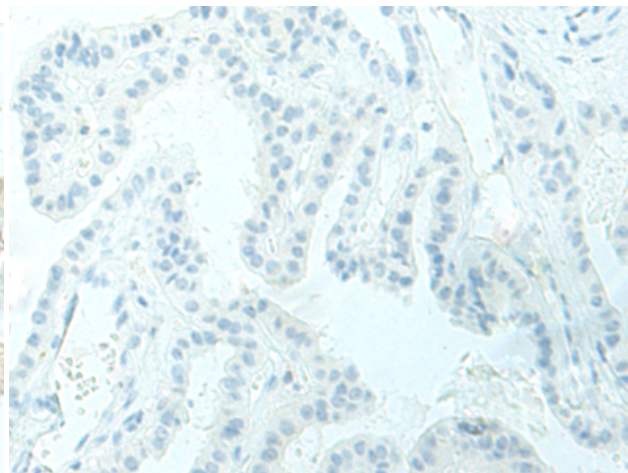
**Constituents:** PBS (without Mg<sup>2+</sup> and Ca<sup>2+</sup>), pH 7.4, 150 mM NaCl, 0.05% Sodium Azide and 40% glycerol

**Research Areas:** Epigenetics and Nuclear Signaling, Immunology

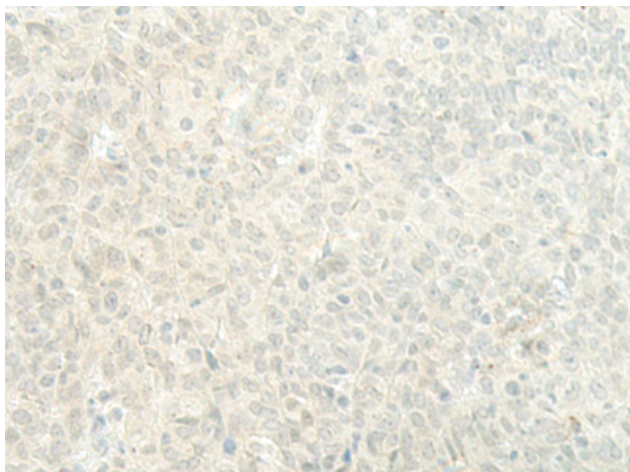
**Storage & Shipping:** Store at –20°C. Avoid repeated freezing and thawing



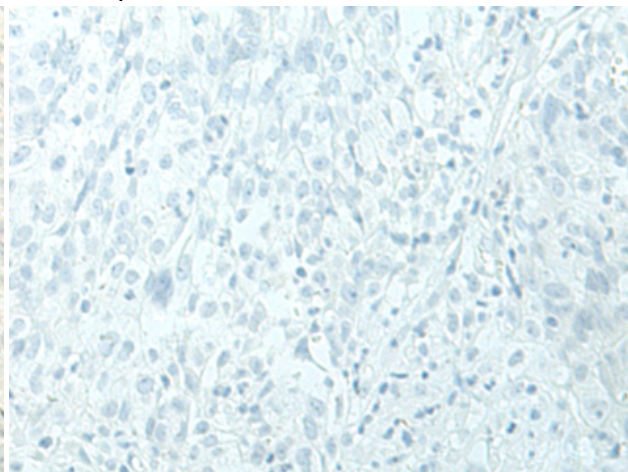
Immunohistochemistry analysis of paraffin embedded Human thyroid cancer tissue using 221980(ESRP2 Antibody) at a dilution of 1/95(Nucleus).



In comparison with the IHC on the left, the same paraffin-embedded Human thyroid cancer tissue is first treated with the synthetic peptide and then with 221980(Anti-ESRP2 Antibody) at dilution 1/95.



The image on the left is immunohistochemistry of paraffin-embedded Human ovarian cancer tissue using 221980(Anti-ESRP2 Antibody) at a dilution of 1/95.



In comparison with the IHC on the left, the same paraffin-embedded Human ovarian cancer tissue is first treated with synthetic peptide and then with D263833(Anti-ESRP2 Antibody) at dilution 1/95.