

## ESRRB RABBIT PAB

**Cat.#:** S220531

**Product Name:** Anti-ESRRB Rabbit Polyclonal Antibody

**Synonyms:** ERR2; ERRb; ESRL2; NR3B2; DFNB35

**UNIPROT ID:** O95718 (Gene Accession - NP\_004443 )

**Background:** This gene encodes a protein with similarity to the estrogen receptor. Its function is unknown; however, a similar protein in mouse plays an essential role in placental development.

**Immunogen:** Synthetic peptide of human ESRRB

**Applications:** ELISA, IHC

**Recommended Dilutions:** IHC: 50-200; ELISA: 2000-5000

**Host Species:** Rabbit

**Clonality:** Rabbit Polyclonal

**Isotype:** Immunogen-specific rabbit IgG

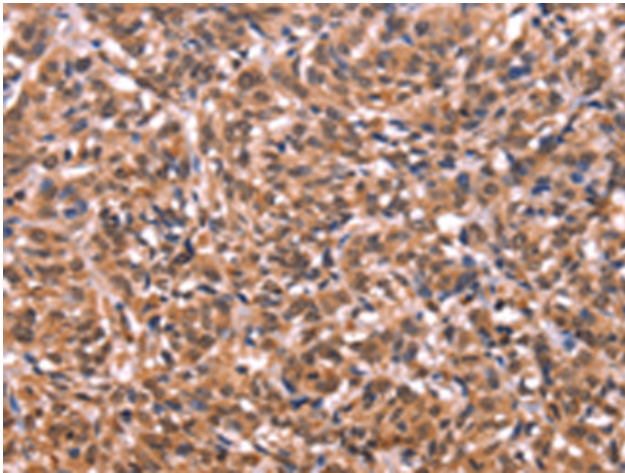
**Purification:** Antigen affinity purification

**Species Reactivity:** Human

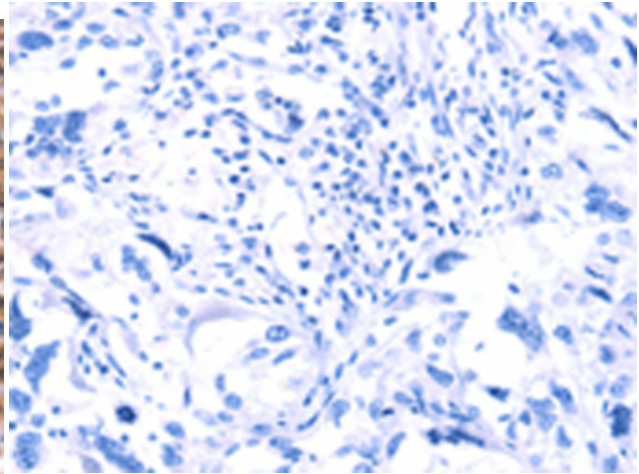
**Constituents:** PBS (without Mg<sup>2+</sup> and Ca<sup>2+</sup>), pH 7.4, 150 mM NaCl, 0.05% Sodium Azide and 40% glycerol

**Research Areas:** Signal Transduction, Epigenetics and Nuclear Signaling, Developmental Biology

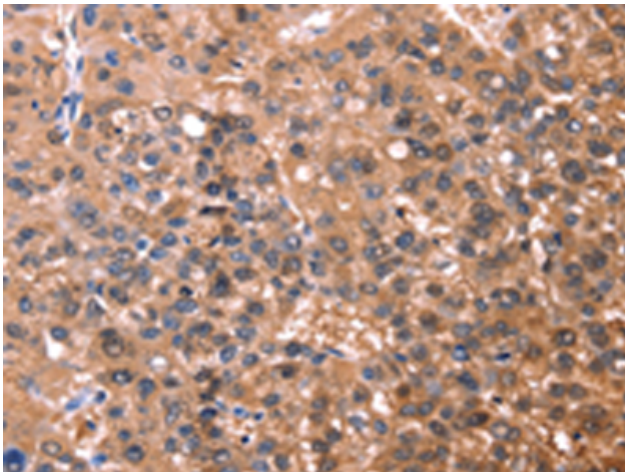
**Storage & Shipping:** Store at -20°C. Avoid repeated freezing and thawing



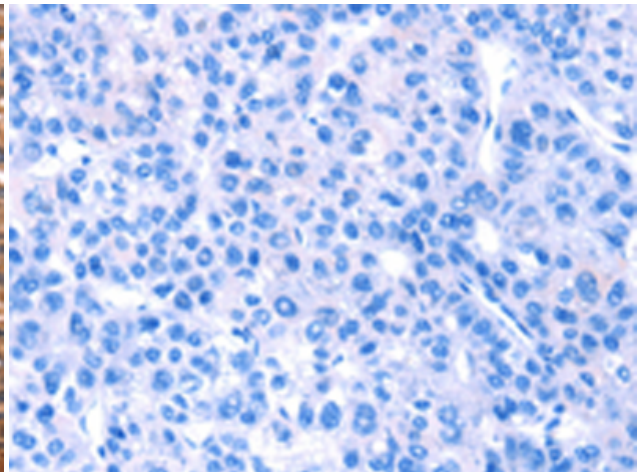
Immunohistochemistry analysis of paraffin-embedded Human esophagus cancer tissue using 220531(ESRRB Antibody) at a dilution of 1/40(Nucleus).



In comparison with the IHC on the left, the same paraffin-embedded Human esophagus cancer tissue is first treated with the synthetic peptide and then with 220531(Anti-ESRRB Antibody) at dilution 1/40.



The image on the left is immunohistochemistry of paraffin-embedded Human liver cancer tissue using 220531(Anti-ESRRB Antibody) at a dilution of 1/40.



In comparison with the IHC on the left, the same paraffin-embedded Human liver cancer tissue is first treated with synthetic peptide and then with D261660(Anti-ESRRB Antibody) at dilution 1/40.