

ESTROGEN RECEPTOR ALPHA RABBIT MAB

Cat.#: N262193

Product Name: Anti-Estrogen Receptor alpha Rabbit Monoclonal Antibody

Synonyms: ESRI; Era; Eralpha; Estrogen receptor; Estradiol receptor; ER-alpha; Estrogen receptor 1; NR3A1; ER; ESR; ESRA; Estrogen receptor alpha

UNIPROT ID: P03372

Background: ER (estrogen receptor 1) a member of the steroid receptor superfamily, contains highly conserved DNA binding (DBD) and ligand binding domains (LBD). Through its estrogen-independent and estrogen-dependent activation domains (AF-1 and AF-2, respectively), ER regulates transcription by recruiting coactivator proteins and interacting with general transcriptional machinery. Phosphorylation provides an important mechanism to regulate ER activity. ER is phosphorylated on multiple sites.

Immunogen: A synthetic peptide of human Estrogen Receptor alpha

Applications: WB,IHC-F,IHC-P,ICC/IF,IP,ChIP

Recommended Dilutions: WB: 1/500-1/1000 IHC: 1/50-1/100 IF: 1/50-1/200 IP: 1/20 ChIP: 1/20

Host Species: Rabbit

Clonality: Rabbit Monoclonal

Clone ID: R05-1E4

MW: Calculated MW: 66 kDa; Observed MW: 66 kDa

Isotype: IgG

Purification: Affinity Purified

Species Reactivity: Human

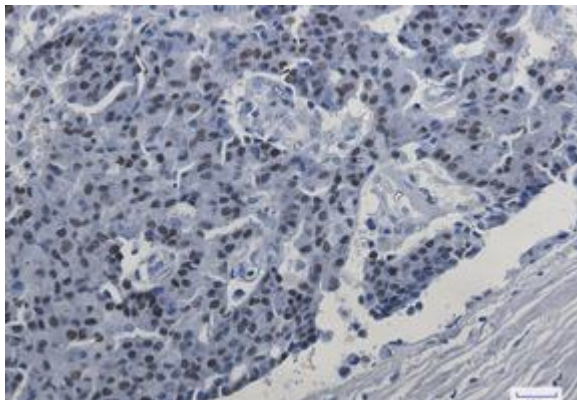
Conjugation: Unconjugated

Modification: Unmodified

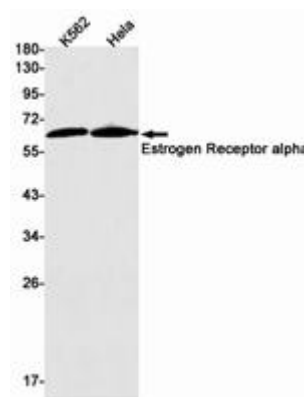
Constituents: PBS (without Mg²⁺ and Ca²⁺), pH 7.3 containing 50% glycerol, 0.5% BSA and 0.02% sodium azide

Research Areas: NeuroscienceyyyyyEstrogen Receptor

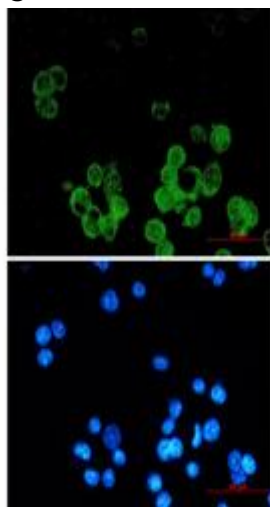
Storage & Shipping: Store at -20°C. Avoid repeated freezing and thawing



Immunohistochemistry analysis of paraffin-embedded Human breast cancer using Estrogen Receptor alpha antibody. High-pressure and temperature Sodium Citrate pH 6.0 was used for antigen retrieval.



Western blot analysis of Estrogen Receptor alpha in K562, Hela lysates using Estrogen Receptor alpha antibody.



Immunocytochemistry analysis of Estrogen Receptor alpha (green) in MCF-7 using Estrogen Receptor alpha antibody, and DAPI (blue)