

ETV2 RABBIT PAB

Cat.#: S221983

Product Name: Anti-ETV2 Rabbit Polyclonal Antibody

Synonyms: ER71; ETSRP71

UNIPROT ID: O00321 (Gene Accession - NP_055024)

Background: ETS translocation variant 2 (ETV2), also known as ETSRP and ER71, is a 37 kDa transcription factor that is expressed in presumptive vascular progenitor cells. It plays an important role in vascular development by promoting the expansion of hemangioblasts and vascular endothelial cells while inhibiting differentiation into cardiomyocytes. It contains one ETS DNA binding domain (aa 234-314). Within aa 125-231, mouse ETV2 shares 54% and 85% aa sequence identity with human and rat ETV2, respectively.

Immunogen: Synthetic peptide of human ETV2

Applications: ELISA, IHC

Recommended Dilutions: IHC: Oct-50; ELISA: 5000-10000

Host Species: Rabbit

Clonality: Rabbit Polyclonal

Isotype: Immunogen-specific rabbit IgG

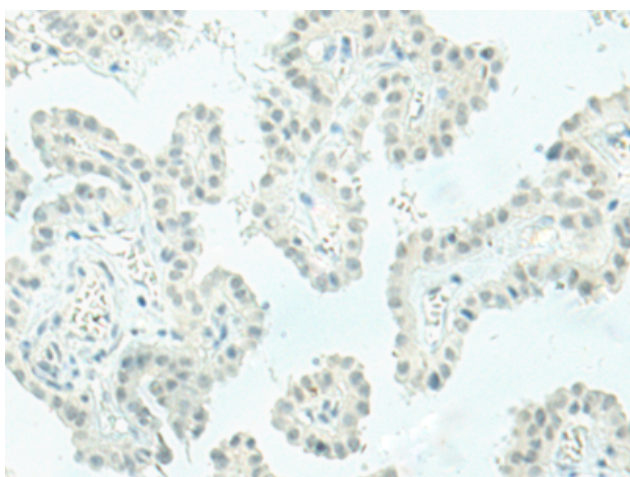
Purification: Antigen affinity purification

Species Reactivity: Human

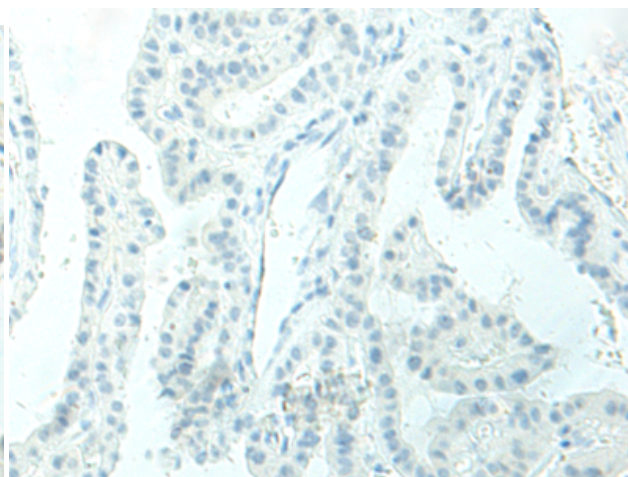
Constituents: PBS (without Mg²⁺ and Ca²⁺), pH 7.4, 150 mM NaCl, 0.05% Sodium Azide and 40% glycerol

Research Areas: Epigenetics and Nuclear Signaling, Stem Cells

Storage & Shipping: Store at -20°C. Avoid repeated freezing and thawing



Immunohistochemistry analysis of paraffin embedded Human thyroid cancer tissue using 221983(ETV2 Antibody) at a dilution of 1/20(Nucleus).



In comparison with the IHC on the left, the same paraffin-embedded Human thyroid cancer tissue is first treated with the synthetic peptide and then with 221983(Anti-ETV2 Antibody) at dilution 1/20.