

ETV4 RABBIT PAB

Cat.#: S215530

Product Name: Anti-ETV4 Rabbit Polyclonal Antibody

Synonyms: EIAF; PEA3; EIA-F; PEAS3

UNIPROT ID: P43268 (Gene Accession - NP_001977)

Background: Transcriptional activator that binds to the enhancer of the adenovirus EIA gene; the core-binding sequence is 5'[AC]GGA[AT]GT-3'.

Immunogen: Synthetic peptide of human ETV4

Applications: ELISA, IHC

Recommended Dilutions: IHC: 20-100; ELISA: 5000-10000

Host Species: Rabbit

Clonality: Rabbit Polyclonal

Isotype: Immunogen-specific rabbit IgG

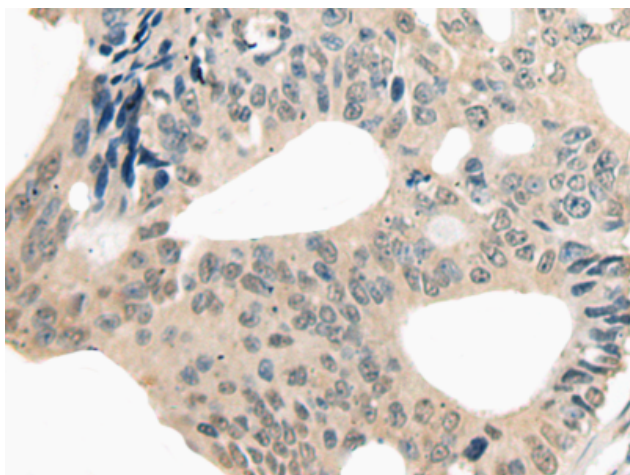
Purification: Antigen affinity purification

Species Reactivity: Human, Mouse

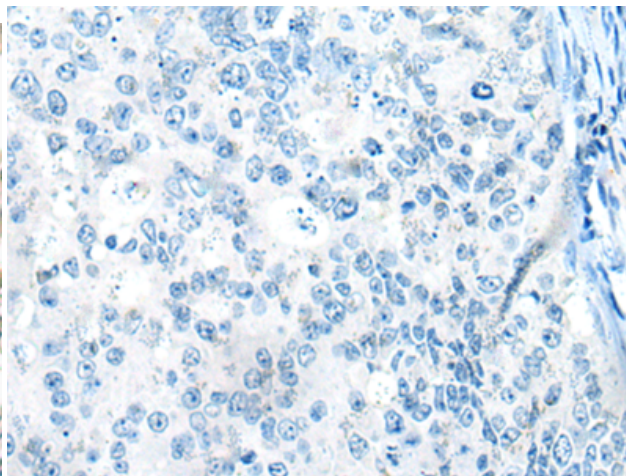
Constituents: PBS (without Mg²⁺ and Ca²⁺), pH 7.4, 150 mM NaCl, 0.05% Sodium Azide and 40% glycerol

Research Areas: Epigenetics and Nuclear Signaling, Neuroscience

Storage & Shipping: Store at -20°C. Avoid repeated freezing and thawing



Immunohistochemistry analysis of paraffin embedded Human colorectal cancer tissue using 215530(ETV4 Antibody) at a dilution of 1/25(Nucleus and Cytoplasm).



In comparison with the IHC on the left, the same paraffin-embedded Human colorectal cancer tissue is first treated with the synthetic peptide and then with 215530(Anti-ETV4 Antibody) at dilution 1/25.