

EVA1A RABBIT PAB

Cat.#: S221032

Product Name: Anti-EVA1A Rabbit Polyclonal Antibody

Synonyms: FAM176A; TMEM166

UNIPROT ID: Q9H8M9 (Gene Accession - NP_115557)

Background: Acts as a regulator of programmed cell death, mediating both autophagy and apoptosis.

Immunogen: Synthetic peptide of human EVA1A

Applications: ELISA, WB, IHC

Recommended Dilutions: IHC: 25-100;WB: 200-1000;ELISA: 1000-2000

Host Species: Rabbit

Clonality: Rabbit Polyclonal

Isotype: Immunogen-specific rabbit IgG

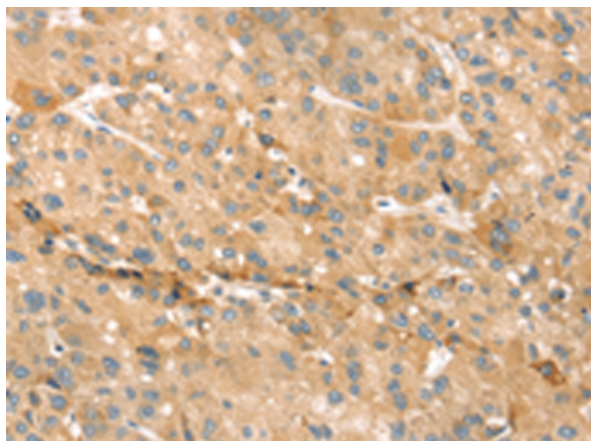
Purification: Antigen affinity purification

Species Reactivity: Human, Mouse

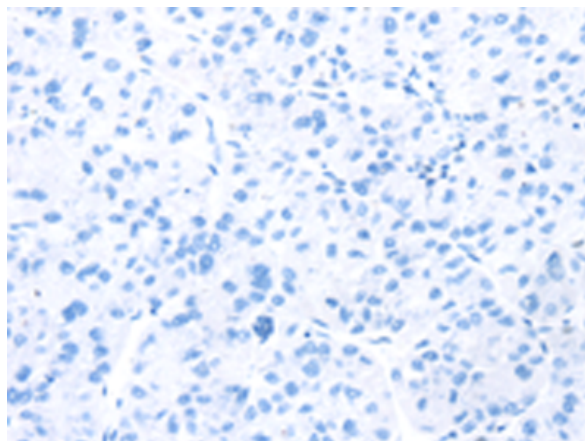
Constituents: PBS (without Mg²⁺ and Ca²⁺), pH 7.4, 150 mM NaCl, 0.05% Sodium Azide and 40% glycerol

Research Areas: Cancer, Cardiovascular

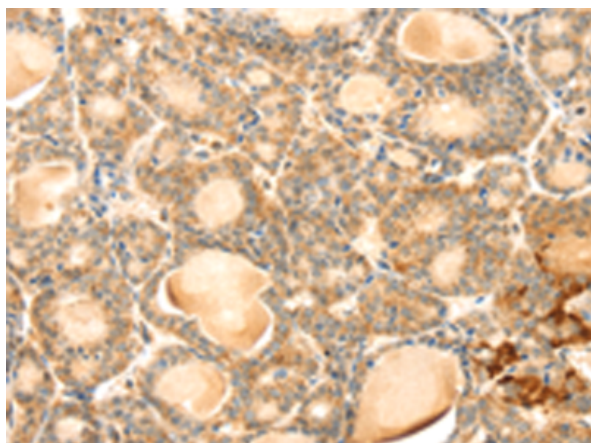
Storage & Shipping: Store at -20°C. Avoid repeated freezing and thawing



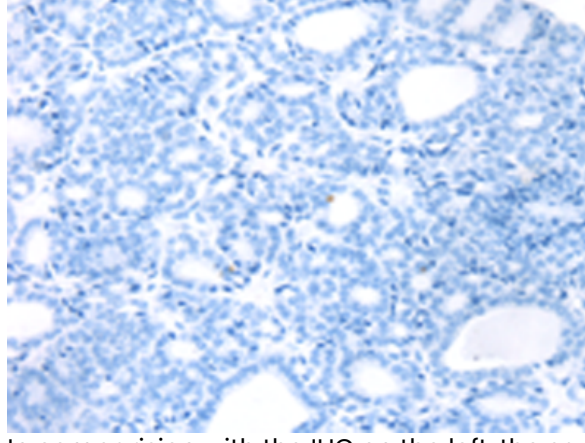
Immunohistochemistry analysis of paraffin embedded Human liver cancer tissue using 221032(EVA1A Antibody) at a dilution of 1/30(Cytoplasm).



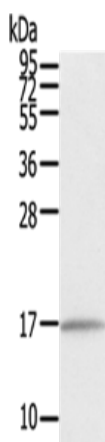
In comparison with the IHC on the left, the same paraffin-embedded Human liver cancer tissue is first treated with the synthetic peptide and then with 221032(Anti-EVA1A Antibody) at dilution 1/30.



The image on the left is immunohistochemistry of paraffin-embedded Human thyroid cancer tissue using 221032(Anti-EVA1A Antibody) at a dilution of 1/30.



In comparison with the IHC on the left, the same paraffin-embedded Human thyroid cancer tissue is first treated with synthetic peptide and then with D262379(Anti-EVA1A Antibody) at dilution 1/30.



Gel: 12%SDS-PAGE, Lysate: 40 µg;
 Lane: Human normal liver tissue;
 Primary antibody: 221032(EVA1A Antibody) at dilution 1/550;
 Secondary antibody: Goat anti rabbit IgG at 1/8000 dilution;
 Exposure time: 10 seconds



Product Description

Pioneering GTPase and Oncogene Product Development since 2010
