

## EVC2 RABBIT PAB

**Cat.#:** S220535

**Product Name:** Anti-EVC2 Rabbit Polyclonal Antibody

**Synonyms:** LBN; WAD

**UNIPROT ID:** Q86UK5 (Gene Accession - NP\_001159608 )

**Background:** This gene encodes a protein that functions in bone formation and skeletal development. Mutations in this gene, as well as in a neighboring gene that lies in a head-to-head configuration, cause Ellis-van Creveld syndrome, an autosomal recessive skeletal dysplasia that is also known as chondroectodermal dysplasia. Mutations in this gene also cause acrofacial dysostosis Weyers type, also referred to as Curry-Hall syndrome, a disease that combines limb and facial abnormalities. Alternative splicing results in multiple transcript variants.

**Immunogen:** Synthetic peptide of human EVC2

**Applications:** ELISA, WB, IHC

**Recommended Dilutions:** IHC: 50-300;WB: 500-2000;ELISA: 2000-5000

**Host Species:** Rabbit

**Clonality:** Rabbit Polyclonal

**Isotype:** Immunogen-specific rabbit IgG

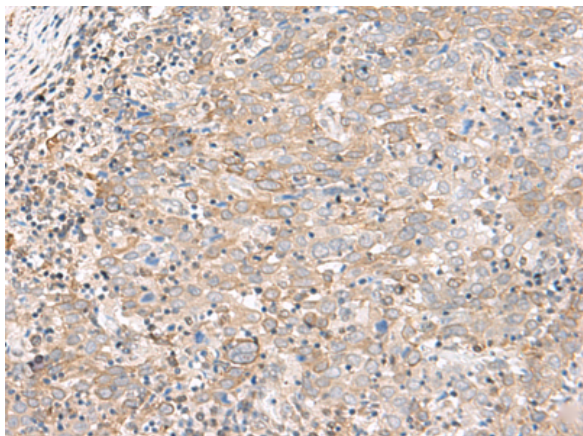
**Purification:** Antigen affinity purification

**Species Reactivity:** Human, Mouse

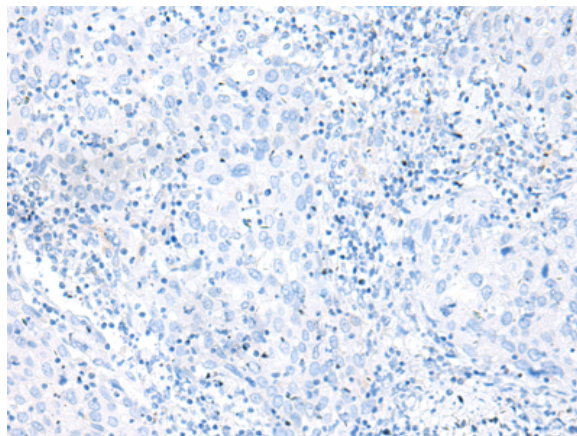
**Constituents:** PBS (without Mg<sup>2+</sup> and Ca<sup>2+</sup>), pH 7.4, 150 mM NaCl, 0.05% Sodium Azide and 40% glycerol

**Research Areas:** Cell Biology

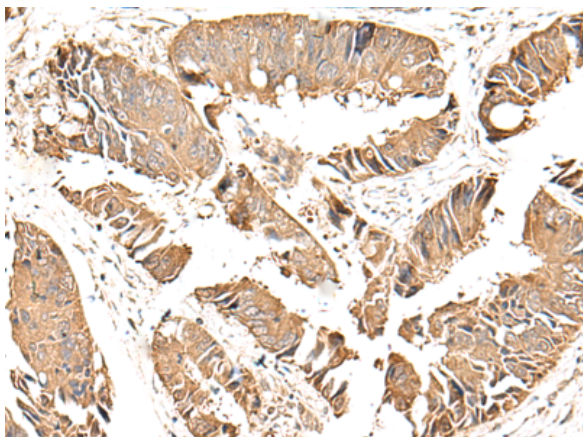
**Storage & Shipping:** Store at -20°C. Avoid repeated freezing and thawing



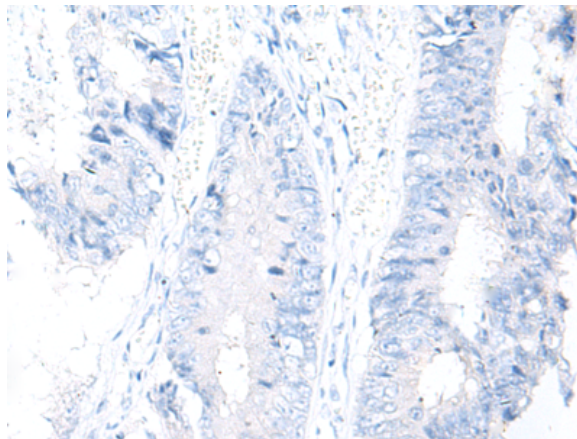
Immunohistochemistry analysis of paraffin embedded Human cervical cancer tissue using 220535(EVC2 Antibody) at a dilution of 1/75(Cytoplasm and Cell membrane).



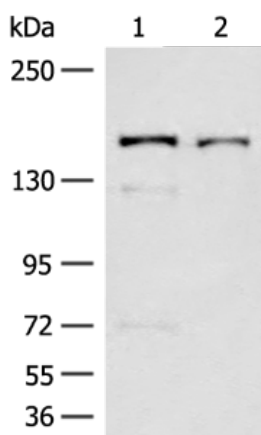
In comparison with the IHC on the left, the same paraffin-embedded Human cervical cancer tissue is first treated with the synthetic peptide and then with 220535(Anti-EVC2 Antibody) at dilution 1/75.



The image on the left is immunohistochemistry of paraffin-embedded Human colorectal cancer tissue using 220535(Anti-EVC2 Antibody) at a dilution of 1/75.



In comparison with the IHC on the left, the same paraffin-embedded Human colorectal cancer tissue is first treated with synthetic peptide and then with D261664(Anti-EVC2 Antibody) at dilution 1/75.



Gel: 6%SDS-PAGE, Lysate: 40 µg;  
Lane 1-2: Raji and A375 cell lysates;  
Primary antibody: 220535(EVC2 Antibody) at dilution 1/500;  
Secondary antibody: Goat anti rabbit IgG at 1/8000 dilution;  
Exposure time: 30 seconds



# Product Description

Pioneering GTPase and Oncogene Product Development since 2010

---