

## EWSR1 RABBIT MAB

**Cat.#:** N262196

**Product Name:** Anti-EWSR1 Rabbit Monoclonal Antibody

**Synonyms:** EWSR1; EWS; RNA-binding protein EWS; EWS oncogene; Ewing sarcoma breakpoint region 1 protein

**UNIPROT ID:** Q01844

**Background:** Might normally function as a repressor. EWS-fusion-proteins (EFPS) may play a role in the tumorigenic process. They may disturb gene expression by mimicking, or interfering with the normal function of CTD-POLII within the transcription initiation complex.

**Immunogen:** A synthetic peptide of human EWSR1

**Applications:** WB, ICC/IF

**Recommended Dilutions:** WB: 1/500-1/1000 IF: 1/50-1/200

**Host Species:** Rabbit

**Clonality:** Rabbit Monoclonal

**Clone ID:** R09-3A7

**MW:** Calculated MW: 68 kDa; Observed MW: 85 kDa

**Isotype:** IgG

**Purification:** Affinity Purified

**Species Reactivity:** Human, Mouse, Rat

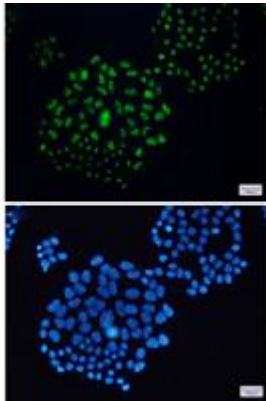
**Conjugation:** Unconjugated

**Modification:** Unmodified

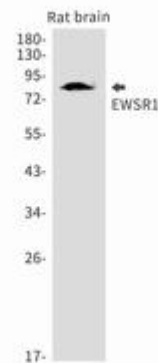
**Constituents:** PBS (without Mg<sup>2+</sup> and Ca<sup>2+</sup>), pH 7.3 containing 50% glycerol, 0.5% BSA and 0.02% sodium azide

**Research Areas:** Tags & Cell Markers

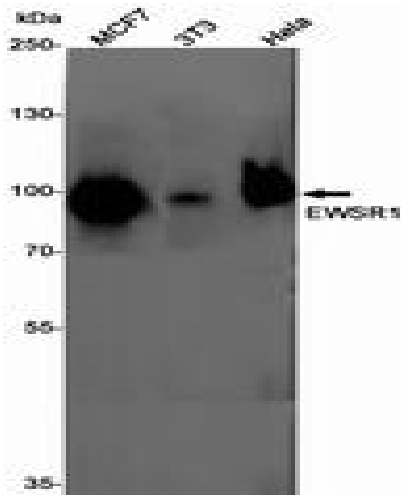
**Storage & Shipping:** Store at -20°C. Avoid repeated freezing and thawing



Immunocytochemistry analysis of EWSR1 (green) in Hela using EWSR1 antibody, and DAPI (blue)



Western blot analysis of EWSR1 in rat brain lysates using EWSR1 antibody.



Western blot analysis of EWSR1 in MCF-7, 3T3, Hela lysates using EWSR1 antibody.