

EWSR1 RABBIT MAB

Cat.#: N262195

Product Name: Anti-EWSR1 Rabbit Monoclonal Antibody

Synonyms: EWSR1; EWS; RNA-binding protein EWS; EWS oncogene; Ewing sarcoma breakpoint region 1 protein

UNIPROT ID: Q01844

Background: Might normally function as a repressor. EWS-fusion-proteins (EFPS) may play a role in the tumorigenic process. They may disturb gene expression by mimicking, or interfering with the normal function of CTD-POLII within the transcription initiation complex.

Immunogen: A synthetic peptide of human EWSR1

Applications: WB, ICC/IF

Recommended Dilutions: WB: 1/500-1/1000 IF: 1/50-1/200

Host Species: Rabbit

Clonality: Rabbit Monoclonal

Clone ID: R04-4B3

MW: Calculated MW: 68 kDa; Observed MW: 85 kDa

Isotype: IgG

Purification: Affinity Purified

Species Reactivity: Human

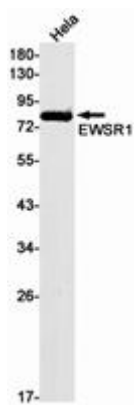
Conjugation: Unconjugated

Modification: Unmodified

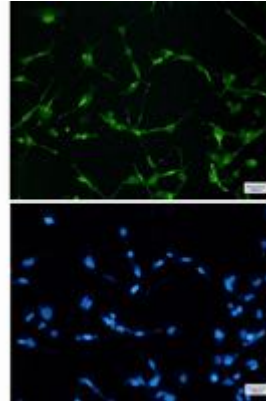
Constituents: PBS (without Mg²⁺ and Ca²⁺), pH 7.3 containing 50% glycerol, 0.5% BSA and 0.02% sodium azide

Research Areas: Tags & Cell Markers

Storage & Shipping: Store at -20°C. Avoid repeated freezing and thawing



Western blot analysis of EWSR1 in HeLa lysates using EWSR1 antibody.



Immunocytochemistry analysis of EWSR1 (green) in 293t using EWSR1 antibody, and DAPI (blue).