

## EXOCYST COMPLEX COMPONENT 3 RABBIT MAB

**Cat.#:** N262853

**Product Name:** Anti-Exocyst Complex Component 3 Rabbit Monoclonal Antibody

**Synonyms:** SEC6; Sec6p; SEC6L1

**UNIPROT ID:** O60645

**Background:** Component of the exocyst complex involved in the docking of exocytic vesicles with fusion sites on the plasma membrane.

**Immunogen:** A synthetic peptide of human rSec6

**Applications:** WB, ICC/IF, IP

**Recommended Dilutions:** WB: 1/500-1/1000 IF: 1/50-1/200 IP: 1/20

**Host Species:** Rabbit

**Clonality:** Rabbit Monoclonal

**Clone ID:** R07-4D7

**MW:** Calculated MW: 86 kDa; Observed MW: 86 kDa

**Isotype:** IgG

**Purification:** Affinity Purified

**Species Reactivity:** Human, Mouse, Rat

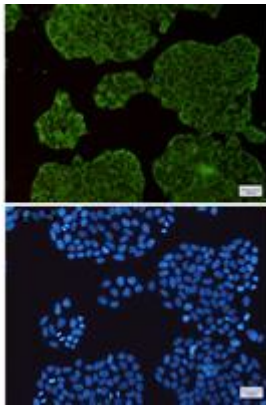
**Conjugation:** Unconjugated

**Modification:** Unmodified

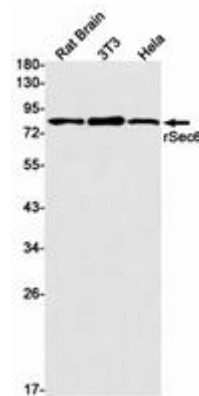
**Constituents:** PBS (without Mg<sup>2+</sup> and Ca<sup>2+</sup>), pH 7.3 containing 50% glycerol, 0.5% BSA and 0.02% sodium azide

**Research Areas:** Signal Transduction

**Storage & Shipping:** Store at -20°C. Avoid repeated freezing and thawing



Immunocytochemistry analysis of rSec6 (green) in HeLa using rSec6 antibody, and DAPI (blue)



Western blot analysis of rSec6 in rat Brain, 3T3, HeLa lysates using Exocyst Complex Component 3 antibody.