

EXTL1 RABBIT PAB

Cat.#: S220539

Product Name: Anti-EXTL1 Rabbit Polyclonal Antibody

Synonyms: EXTL

UNIPROT ID: Q92935 (Gene Accession - NP_004446)

Background: This gene is a member of the multiple exostoses (EXT) family of glycosyltransferases, which function in the chain polymerization of heparan sulfate and heparin. The encoded protein harbors alpha 1,4- N-acetylglucosaminyltransferase activity, and is involved in chain elongation of heparan sulfate and possibly heparin.

Immunogen: Synthetic peptide of human EXTL1

Applications: ELISA, IHC

Recommended Dilutions: IHC: 25-100; ELISA: 1000-2000

Host Species: Rabbit

Clonality: Rabbit Polyclonal

Isotype: Immunogen-specific rabbit IgG

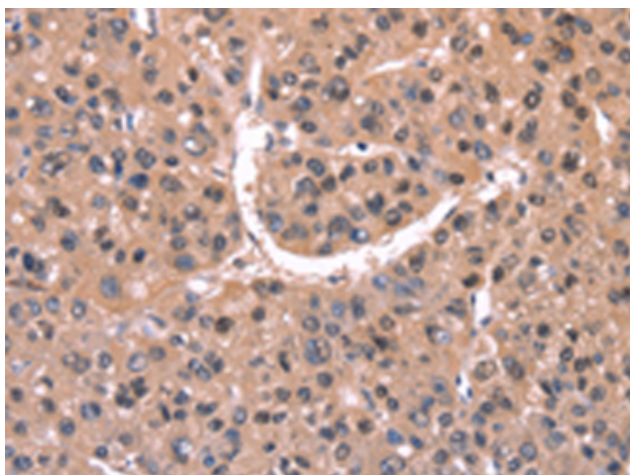
Purification: Antigen affinity purification

Species Reactivity: Human, Mouse

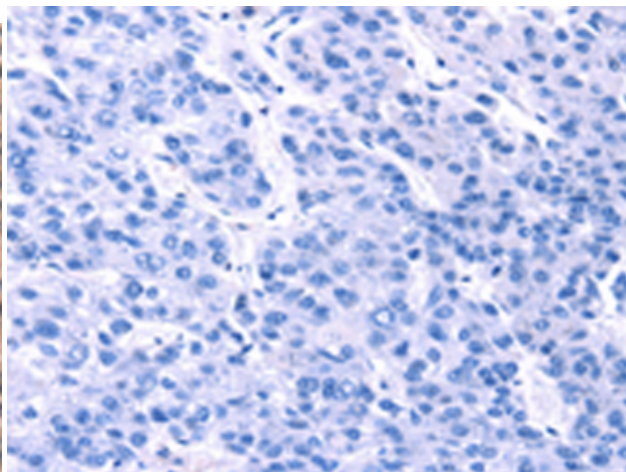
Constituents: PBS (without Mg²⁺ and Ca²⁺), pH 7.4, 150 mM NaCl, 0.05% Sodium Azide and 40% glycerol

Research Areas: Metabolism, Developmental Biology

Storage & Shipping: Store at -20°C. Avoid repeated freezing and thawing



Immunohistochemistry analysis of paraffin embedded Human liver cancer tissue using 220539(EXTL1 Antibody) at a dilution of 1/20(Cytoplasm).



In comparison with the IHC on the left, the same paraffin-embedded Human liver cancer tissue is first treated with the synthetic peptide and then with 220539(Anti-EXTL1 Antibody) at dilution 1/20.