

## EZRIN RABBIT MAB

**Cat.#:** N263325

**Product Name:** Anti-Ezrin Rabbit Monoclonal Antibody

**Synonyms:** EZR; VIL2; Ezrin; Cytovillin; Villin-2; p81

**UNIPROT ID:** P15311

**Background:** Probably involved in connections of major cytoskeletal structures to the plasma membrane. In epithelial cells, required for the formation of microvilli and membrane ruffles on the apical pole. Along with PLEKHG6, required for normal macropinocytosis.

**Immunogen:** Recombinant protein of human Ezrin

**Applications:** WB,IHC-P,IP

**Recommended Dilutions:** WB: 1/500-1/1000 IHC: 1/50-1/100 IP: 1/20

**Host Species:** Rabbit

**Clonality:** Rabbit Monoclonal

**Clone ID:** R04-8G5

**MW:** Calculated MW: 69 kDa; Observed MW: 80 kDa

**Isotype:** IgG

**Purification:** Affinity Purified

**Species Reactivity:** Human,Mouse,Rat

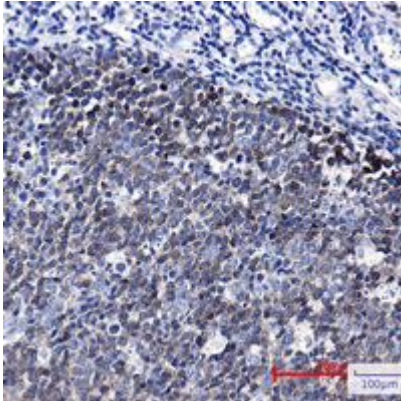
**Conjugation:** Unconjugated

**Modification:** Unmodified

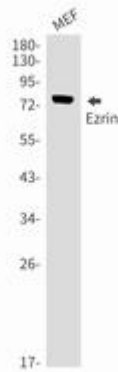
**Constituents:** PBS (without Mg<sup>2+</sup> and Ca<sup>2+</sup>), pH 7.3 containing 50% glycerol, 0.5% BSA and 0.02% sodium azide

**Research Areas:** Cell Biology

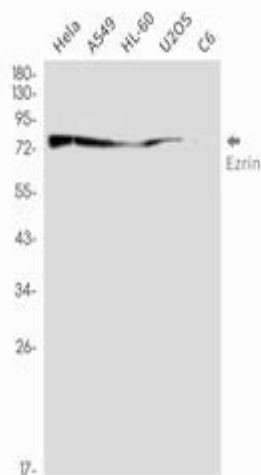
**Storage & Shipping:** Store at -20°C. Avoid repeated freezing and thawing



Immunohistochemistry analysis of paraffin-embedded Human tonsil using Ezrin antibody. High-pressure and temperature Sodium Citrate pH 6.0 was used for antigen retrieval.



Western blot analysis of Ezrin in Sodium MEF lysates using Ezrin antibody.



Western blot analysis of Ezrin in HeLa, A549, HL-60, U2OS, C6 lysates using Ezrin antibody.