

## F2 RABBIT PAB

**Cat.#:** S222411

**Product Name:** Anti-F2 Rabbit Polyclonal Antibody

**Synonyms:** PT; THPH1; RPRGL2

**UNIPROT ID:** P00734 (Gene Accession - NP\_000497 )

**Background:** This gene encodes the prothrombin protein (also known as coagulation factor II). This protein is proteolytically cleaved in multiple steps to form the activated serine protease thrombin. The activated thrombin enzyme plays an important role in thrombosis and hemostasis by converting fibrinogen to fibrin during blood clot formation, by stimulating platelet aggregation, and by activating additional coagulation factors. Thrombin also plays a role in cell proliferation, tissue repair, and angiogenesis as well as maintaining vascular integrity during development and postnatal life. Peptides derived from the C-terminus of this protein have antimicrobial activity against *E. coli* and *P. aeruginosa*. Mutations in this gene lead to various forms of thrombosis and dysprothrombinemia. Rapid increases in cytokine levels following coronavirus infections can dysregulate the coagulation cascade and produce thrombosis, compromised blood supply, and organ failure.

**Immunogen:** Synthetic peptide of human F2

**Applications:** ELISA, WB, IHC

**Recommended Dilutions:** IHC: 50-200;WB: 1000-5000;ELISA: 5000-10000

**Host Species:** Rabbit

**Clonality:** Rabbit Polyclonal

**Isotype:** Immunogen-specific rabbit IgG

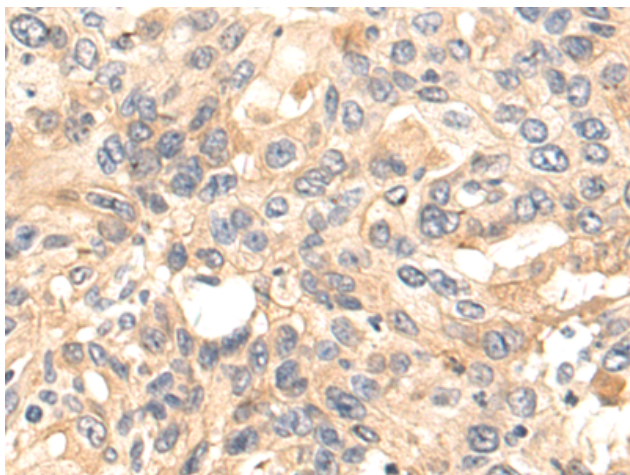
**Purification:** Antigen affinity purification

**Species Reactivity:** Human, Mouse, Rat

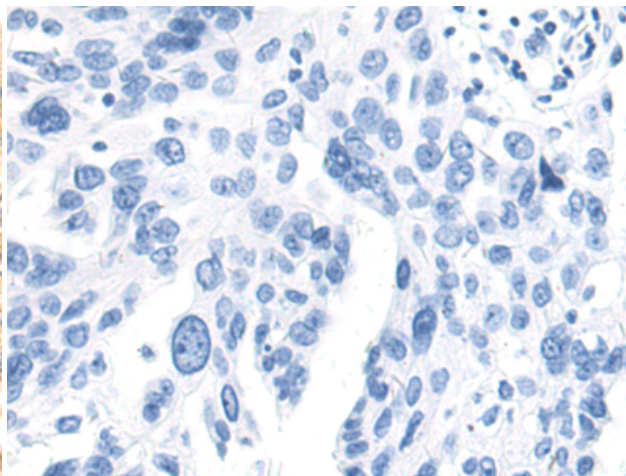
**Constituents:** PBS (without Mg<sup>2+</sup> and Ca<sup>2+</sup>), pH 7.4, 150 mM NaCl, 0.05% Sodium Azide and 40% glycerol

**Research Areas:** Cardiovascular

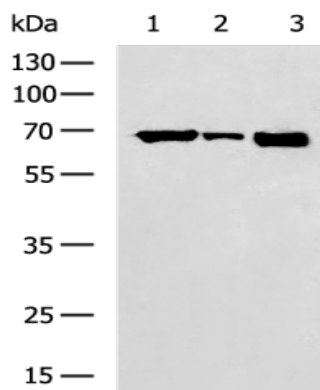
**Storage & Shipping:** Store at -20°C. Avoid repeated freezing and thawing



Immunohistochemistry analysis of paraffin embedded Human breast cancer tissue using 222411(F2 Antibody) at a dilution of 1/50(Cytoplasm).



In comparison with the IHC on the left, the same paraffin-embedded Human breast cancer tissue is first treated with the synthetic peptide and then with 222411(Anti-F2 Antibody) at dilution 1/50.



Gel: 8%SDS-PAGE, Lysate: 40 µg;  
Lane 1-3: HepG2, 293T, Hela cell lysates;  
Primary antibody: 222411(F2 Antibody) at dilution 1/1000;  
Secondary antibody: HRP-conjugated Goat anti rabbit IgG at 1/5000 dilution;  
Exposure time: 1 minute