

## F5(COAGULATION FACTOR V HEAVY CHAIN) RABBIT PAB

**Cat.#:** S215769

**Product Name:** Anti-F5(Coagulation factor V heavy chain) Rabbit Polyclonal Antibody

**Synonyms:** FVL; PCCF; THPH2; RPRGL1

**UNIPROT ID:** P12259 (Gene Accession - NP\_000121 )

**Background:** This gene encodes an essential cofactor of the blood coagulation cascade. This factor circulates in plasma, and is converted to the active form by the release of the activation peptide by thrombin during coagulation. This generates a heavy chain and a light chain which are held together by calcium ions. The activated protein is a cofactor that participates with activated coagulation factor X to activate prothrombin to thrombin. Defects in this gene result in either an autosomal recessive hemorrhagic diathesis or an autosomal dominant form of thrombophilia, which is known as activated protein C resistance.

**Immunogen:** Synthetic peptide of human F5(Coagulation factor V heavy chain)

**Applications:** ELISA, IHC

**Recommended Dilutions:** IHC: 20-100; ELISA: 2000-5000

**Host Species:** Rabbit

**Clonality:** Rabbit Polyclonal

**Isotype:** Immunogen-specific rabbit IgG

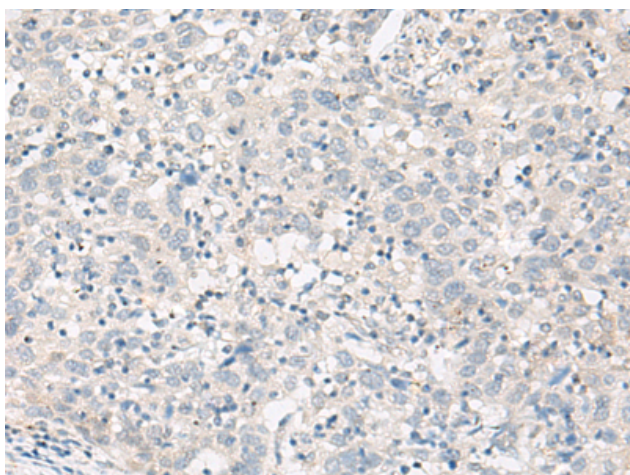
**Purification:** Antigen affinity purification

**Species Reactivity:** Human, Mouse

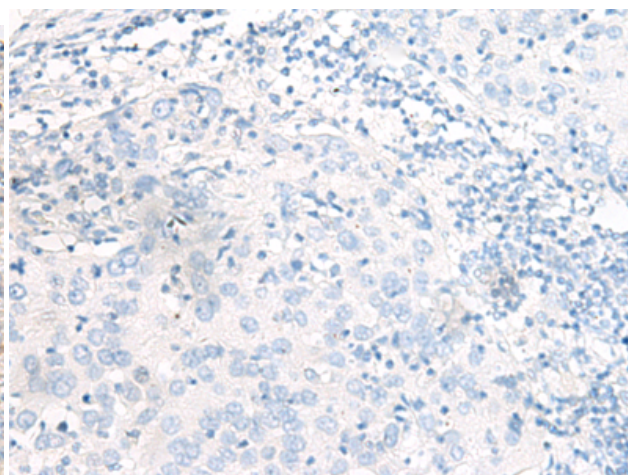
**Constituents:** PBS (without Mg<sup>2+</sup> and Ca<sup>2+</sup>), pH 7.4, 150 mM NaCl, 0.05% Sodium Azide and 40% glycerol

**Research Areas:** Cardiovascular

**Storage & Shipping:** Store at -20°C. Avoid repeated freezing and thawing



Immunohistochemistry analysis of paraffin embedded Human cervical cancer tissue using 215769(F5(Coagulation factor V heavy chain) Antibody) at a dilution of 1/20(Secreted).



In comparison with the IHC on the left, the same paraffin-embedded Human cervical cancer tissue is first treated with the synthetic peptide and then with 215769(Anti-F5(Anti-Coagulation factor V heavy chain) Antibody) at dilution 1/20.



# Product Description

Pioneering GTPase and Oncogene Product Development since 2010

---