

FABP2 RABBIT PAB

Cat.#: S216507

Product Name: Anti-FABP2 Rabbit Polyclonal Antibody

Synonyms: FABPI; I-FABP

UNIPROT ID: P12104 (Gene Accession - BC069466)

Background: The protein encoded by this gene is an intracellular fatty acid-binding protein that participates in the uptake, intracellular metabolism, and transport of long-chain fatty acids. The encoded protein is also involved in the modulation of cell growth and proliferation. This protein binds saturated long-chain fatty acids with high affinity, and may act as a lipid sensor to maintain energy homeostasis.

Immunogen: Fusion protein of human FABP2

Applications: ELISA, WB, IHC

Recommended Dilutions: IHC: 50-200;WB: 1000-5000;ELISA: 5000-10000

Host Species: Rabbit

Clonality: Rabbit Polyclonal

Isotype: Immunogen-specific rabbit IgG

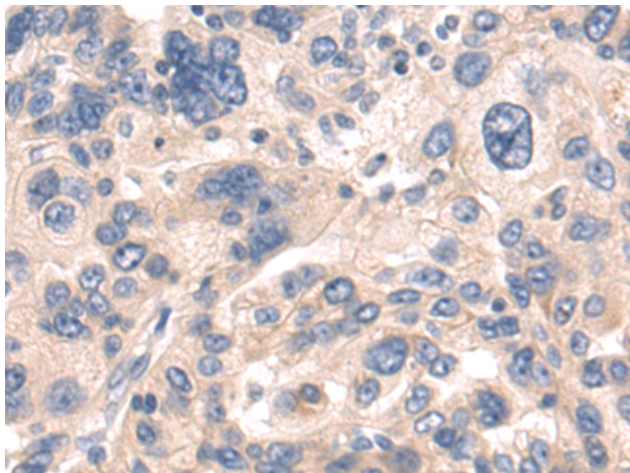
Purification: Antigen affinity purification

Species Reactivity: Human, Mouse, Rat

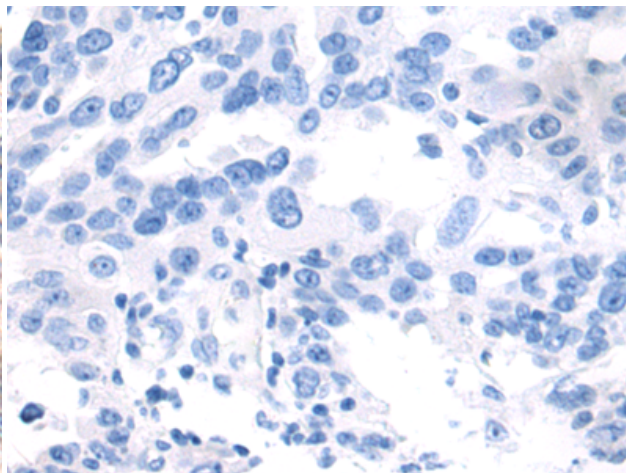
Constituents: PBS (without Mg²⁺ and Ca²⁺), pH 7.4, 150 mM NaCl, 0.05% Sodium Azide and 40% glycerol

Research Areas: Metabolism, Cardiovascular

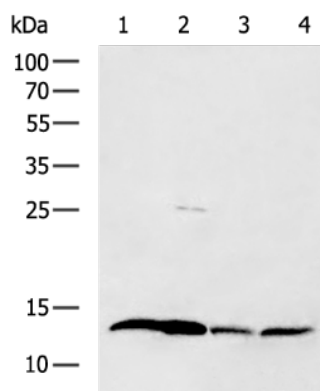
Storage & Shipping: Store at -20°C. Avoid repeated freezing and thawing



Immunohistochemistry analysis of paraffin embedded Human breast cancer tissue using 216507(FABP2 Antibody) at a dilution of 1/75(Cytoplasm).



In comparison with the IHC on the left, the same paraffin-embedded Human breast cancer tissue is first treated with the fusion protein and then with 216507(Anti-FABP2 Antibody) at dilution 1/75.



Gel: 12%SDS-PAGE, Lysate: 40 µg;
 Lane 1-4: Mouse small intestines tissue, Mouse large intestines tissue, Human colorectal cancer tissue, Mouse fetal tissue lysates;
 Primary antibody: 216507(FABP2 Antibody) at dilution 1/1000;
 Secondary antibody: HRP-conjugated Goat anti rabbit IgG at 1/5000 dilution;
 Exposure time: 2 seconds