

## FADS1 RABBIT MAB

**Cat.#:** N263327

**Product Name:** Anti-FADS1 Rabbit Monoclonal Antibody

**Synonyms:** D5D; TU12; FADS6; FADSD5; LLCDL1

**UNIPROT ID:** O60427

**Background:** Acts as a front-end fatty acyl-coenzyme A (CoA) desaturase that introduces a cis double bond at carbon 5 located between a preexisting double bond and the carboxyl end of the fatty acyl chain.

**Immunogen:** A synthetic peptide of human FADS1

**Applications:** WB,IHC-F,IHC-P,ICC/IF

**Recommended Dilutions:** WB: 1/500-1/1000 IHC: 1/50-1/100 IF: 1/50-1/200

**Host Species:** Rabbit

**Clonality:** Rabbit Monoclonal

**Clone ID:** R02-1F0

**MW:** Calculated MW: 52 kDa; Observed MW: 52 kDa

**Isotype:** IgG

**Purification:** Affinity Purified

**Species Reactivity:** Human,Mouse,Rat

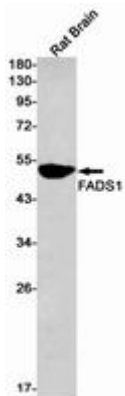
**Conjugation:** Unconjugated

**Modification:** Unmodified

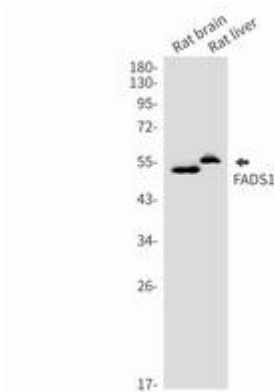
**Constituents:** PBS (without Mg<sup>2+</sup> and Ca<sup>2+</sup>), pH 7.3 containing 50% glycerol, 0.5% BSA and 0.02% sodium azide

**Research Areas:** Tags & Cell Markers

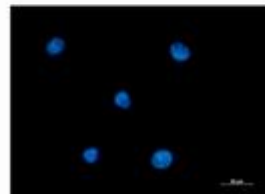
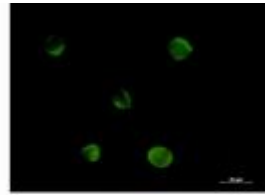
**Storage & Shipping:** Store at -20°C. Avoid repeated freezing and thawing



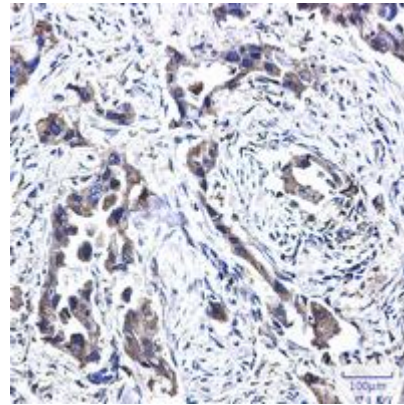
Western blot analysis of FADS1 in rat Brain lysates using FADS1 antibody



Western blot analysis of FADS1 in rat brain, rat liver lysates using FADS1 antibody.



Immunocytochemistry analysis of FADS1 (green) in K562 using FADS1 antibody, and DAPI (blue).



Immunohistochemistry analysis of paraffin-embedded Human lung cancer using FADS1 antibody. High-pressure and temperature Sodium Citrate pH 6.0 was used for antigen retrieval.