

## FAM155B RABBIT PAB

**Cat.#:** S222006

**Product Name:** Anti-FAM155B Rabbit Polyclonal Antibody

**Synonyms:** TED; TMEM28; CXorf63; bB57D9.1

**UNIPROT ID:** O75949 (Gene Accession - NP\_056501)

**Background:** This gene encodes a product belonging to a family of proteins with unknown function. The presence of two transmembrane domains suggests that this protein is a multi-pass membrane protein.

**Immunogen:** Synthetic peptide of human FAM155B

**Applications:** ELISA, IHC

**Recommended Dilutions:** IHC: 40-200; ELISA: 5000-10000

**Host Species:** Rabbit

**Clonality:** Rabbit Polyclonal

**Isotype:** Immunogen-specific rabbit IgG

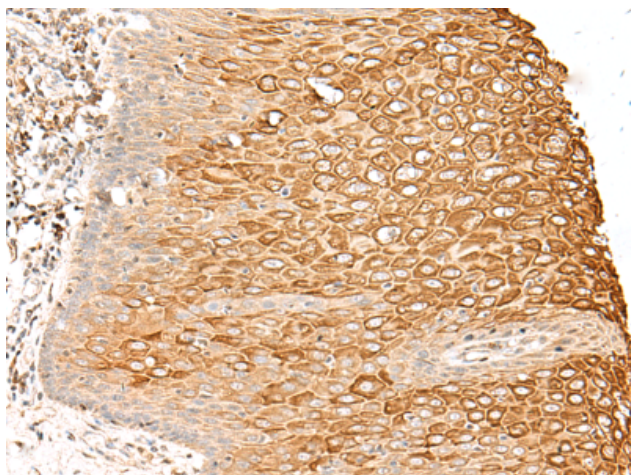
**Purification:** Antigen affinity purification

**Species Reactivity:** Human

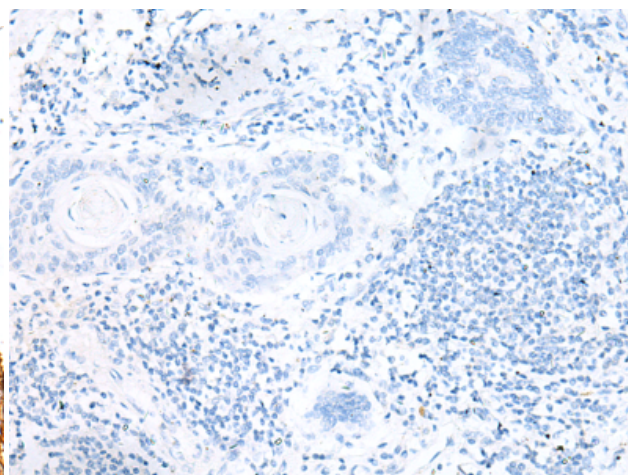
**Constituents:** PBS (without Mg<sup>2+</sup> and Ca<sup>2+</sup>), pH 7.4, 150 mM NaCl, 0.05% Sodium Azide and 40% glycerol

**Research Areas:** Cell Biology

**Storage & Shipping:** Store at -20°C. Avoid repeated freezing and thawing



Immunohistochemistry analysis of paraffin embedded Human esophagus cancer tissue using 222006(FAM155B Antibody) at a dilution of 1/30(Cell membrane).



In comparison with the IHC on the left, the same paraffin-embedded Human esophagus cancer tissue is first treated with the synthetic peptide and then with 222006(Anti-FAM155B Antibody) at dilution 1/30.