

## FAM171A2 RABBIT PAB

**Cat.#:** S222167

**Product Name:** Anti-FAM171A2 Rabbit Polyclonal Antibody

**Synonyms:**

**UNIPROT ID:** A8MVW0 (Gene Accession - NP\_940877 )

**Background:** The function of this protein remains unknown.

**Immunogen:** Synthetic peptide of human FAM171A2

**Applications:** ELISA, IHC

**Recommended Dilutions:** IHC: 20-100; ELISA: 5000-10000

**Host Species:** Rabbit

**Clonality:** Rabbit Polyclonal

**Isotype:** Immunogen-specific rabbit IgG

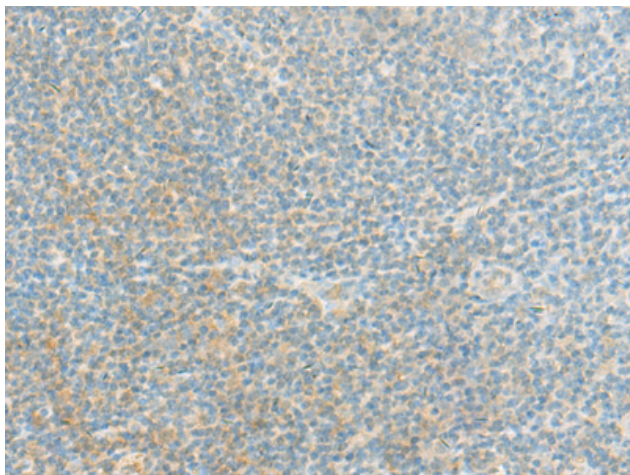
**Purification:** Antigen affinity purification

**Species Reactivity:** Human, Mouse

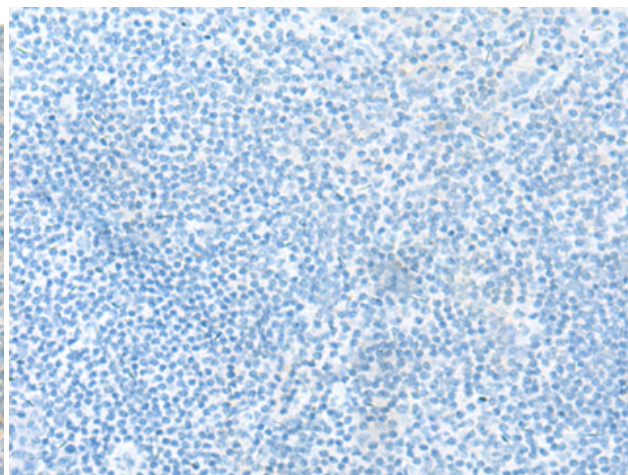
**Constituents:** PBS (without Mg<sup>2+</sup> and Ca<sup>2+</sup>), pH 7.4, 150 mM NaCl, 0.05% Sodium Azide and 40% glycerol

**Research Areas:** Cell Biology

**Storage & Shipping:** Store at -20°C. Avoid repeated freezing and thawing



Immunohistochemistry analysis of paraffin embedded Human tonsil tissue using 222167(FAM171A2 Antibody) at a dilution of 1/40(Cytoplasm).



In comparison with the IHC on the left, the same paraffin-embedded Human tonsil tissue is first treated with the synthetic peptide and then with 222167(Anti-FAM171A2 Antibody) at dilution 1/40.