

FAM20C RABBIT PAB

Cat.#: S222008

Product Name: Anti-FAM20C Rabbit Polyclonal Antibody

Synonyms: RNS; DMP4; G-CK; DMP-4; GEF-CK

UNIPROT ID: Q8IXL6 (Gene Accession - NP_064608)

Background: This gene encodes a member of the family of secreted protein kinases. The encoded protein binds calcium and phosphorylates proteins involved in bone mineralization. Mutations in this gene are associated with the autosomal recessive disorder Raine syndrome.

Immunogen: Synthetic peptide of human FAM20C

Applications: ELISA, IHC

Recommended Dilutions: IHC: 50–200; ELISA: 2000–5000

Host Species: Rabbit

Clonality: Rabbit Polyclonal

Isotype: Immunogen-specific rabbit IgG

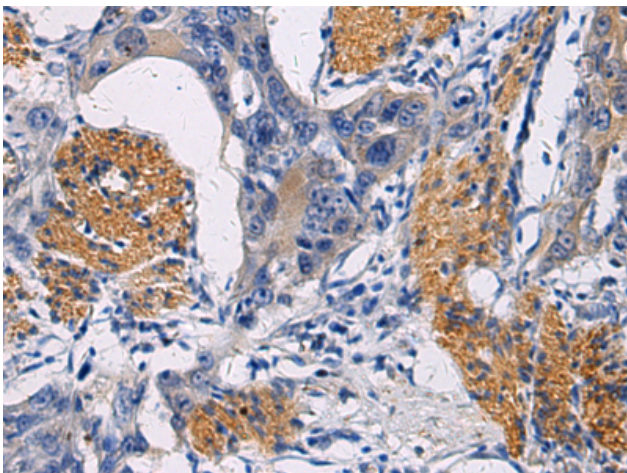
Purification: Antigen affinity purification

Species Reactivity: Human, Mouse

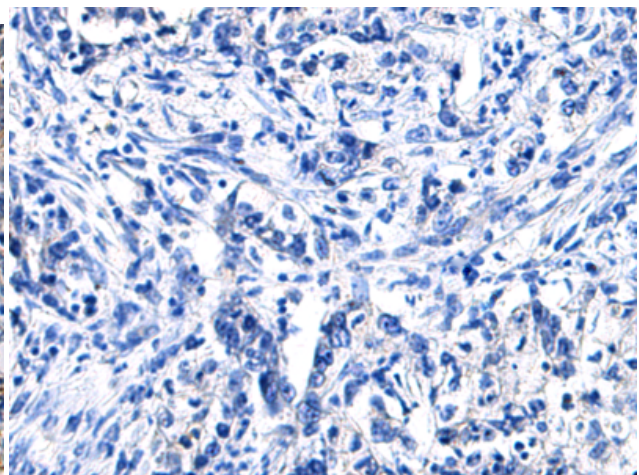
Constituents: PBS (without Mg²⁺ and Ca²⁺), pH 7.4, 150 mM NaCl, 0.05% Sodium Azide and 40% glycerol

Research Areas: Signal Transduction, Stem Cells, Developmental Biology

Storage & Shipping: Store at –20°C. Avoid repeated freezing and thawing



Immunohistochemistry analysis of paraffin embedded Human esophagus cancer tissue using 222008(FAM20C Antibody) at a dilution of 1/45(Cytoplasm).



In comparison with the IHC on the left, the same paraffin-embedded Human esophagus cancer tissue is first treated with the synthetic peptide and then with 222008(Anti-FAM20C Antibody) at dilution 1/45.