

FAM234A RABBIT PAB

Cat.#: S221644

Product Name: Anti-FAM234A Rabbit Polyclonal Antibody

Synonyms: gs19; ITFG3; C16orf9

UNIPROT ID: Q9H0X4 (Gene Accession - NP_114428)

Background: FAM234A, also known as ITFG3, which is a 552 amino acid single-pass transmembrane protein that contains FG-GAP repeats, a motif commonly found in Integrin proteins. There are two isoforms of ITFG3 that are produced as a result of alternative splicing events.

Immunogen: Synthetic peptide of human FAM234A

Applications: ELISA, WB, IHC

Recommended Dilutions: IHC: 20-100;WB: 200-1000;ELISA: 5000-10000

Host Species: Rabbit

Clonality: Rabbit Polyclonal

Isotype: Immunogen-specific rabbit IgG

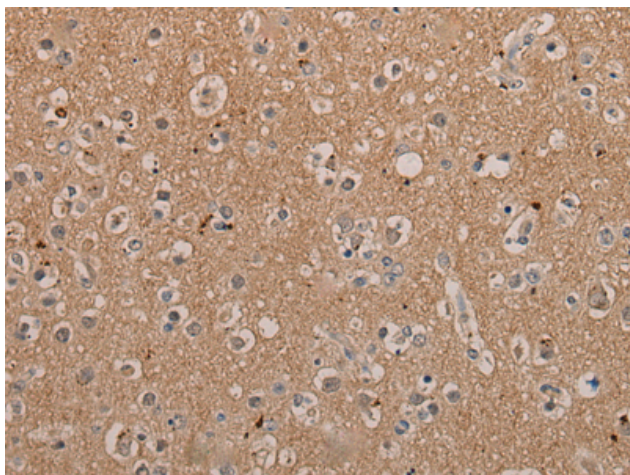
Purification: Antigen affinity purification

Species Reactivity: Human, Mouse, Rat

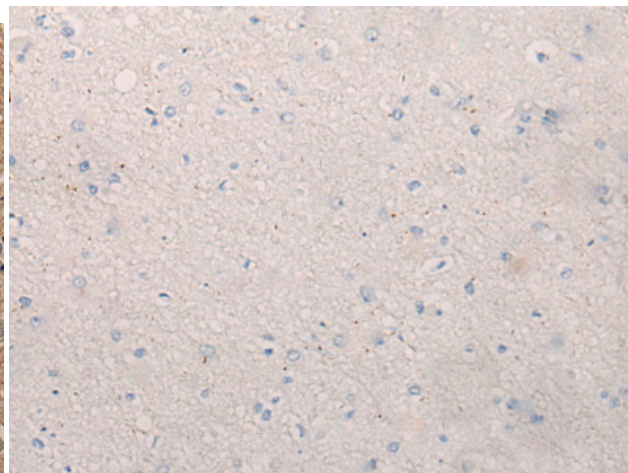
Constituents: PBS (without Mg²⁺ and Ca²⁺), pH 7.4, 150 mM NaCl, 0.05% Sodium Azide and 40% glycerol

Research Areas: Cell Biology

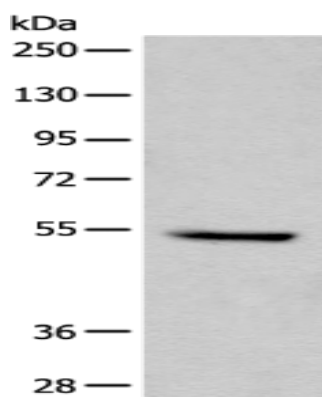
Storage & Shipping: Store at -20°C. Avoid repeated freezing and thawing



Immunohistochemistry analysis of paraffin embedded Human brain tissue using 221644(FAM234A Antibody) at a dilution of 1/25(Cell membrane).



In comparison with the IHC on the left, the same paraffin-embedded Human brain tissue is first treated with the synthetic peptide and then with 221644(Anti-FAM234A Antibody) at dilution 1/25.



Gel: 8%SDS-PAGE, Lysate: 40 μ g;
Lane: Rat brain tissue lysate;
Primary antibody: 221644(FAM234A Antibody) at dilution 1/200;
Secondary antibody: Goat anti rabbit IgG at 1/8000 dilution;
Exposure time: 6 minutes