

FAM3D RABBIT PAB

Cat.#: S218189

Product Name: Anti-FAM3D Rabbit Polyclonal Antibody

Synonyms: EF7; OIT1

UNIPROT ID: Q96BQ1 (Gene Accession - BC015359)

Background: FAM3D, also known as EF-7, belongs to the novel cytokine-like family whose members are secreted four-helix bundle proteins. Human FAM3D is abundantly expressed in placenta as a 224 amino acid (aa) residue precursor with a 25 aa signal sequence. The function of this protein remains unknown.

Immunogen: Fusion protein of human FAM3D

Applications: ELISA, WB, IHC

Recommended Dilutions: IHC: 100-200;WB: 500-2000;ELISA: 5000-10000

Host Species: Rabbit

Clonality: Rabbit Polyclonal

Isotype: Immunogen-specific rabbit IgG

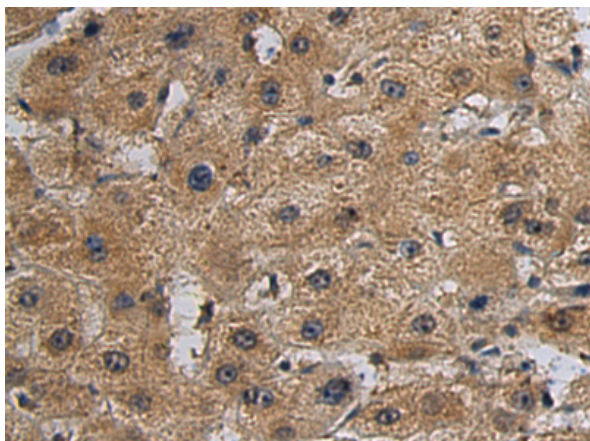
Purification: Antigen affinity purification

Species Reactivity: Human

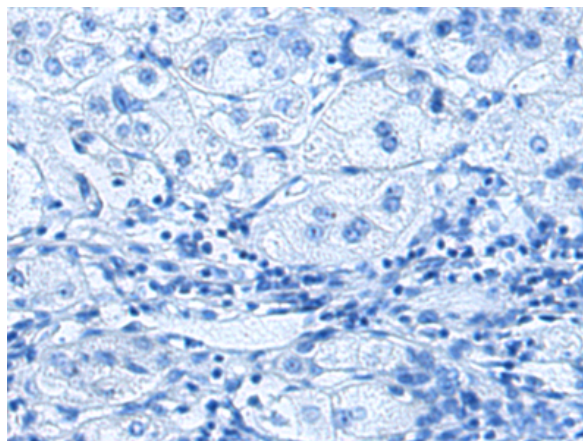
Constituents: PBS (without Mg²⁺ and Ca²⁺), pH 7.4, 150 mM NaCl, 0.05% Sodium Azide and 40% glycerol

Research Areas: Immunology

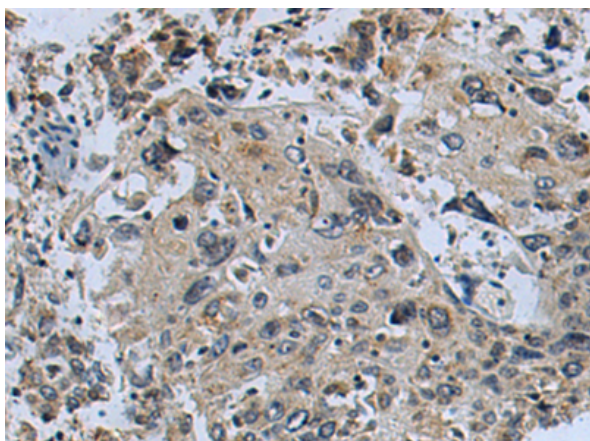
Storage & Shipping: Store at -20°C. Avoid repeated freezing and thawing



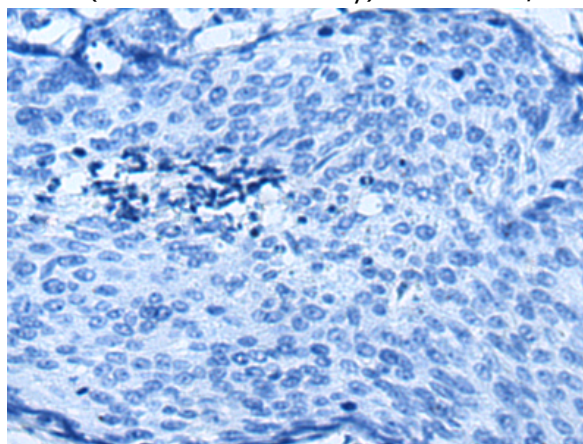
Immunohistochemistry analysis of paraffin embedded Human liver cancer tissue using 218189(FAM3D Antibody) at a dilution of 1/110(Secreted).



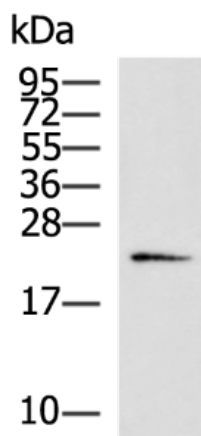
In comparison with the IHC on the left, the same paraffin-embedded Human liver cancer tissue is first treated with the fusion protein and then with 218189(Anti-FAM3D Antibody) at dilution 1/110.



The image on the left is immunohistochemistry of paraffin-embedded Human cervical cancer tissue using 218189(Anti-FAM3D Antibody) at a dilution of 1/110.



In comparison with the IHC on the left, the same paraffin-embedded Human cervical cancer tissue is first treated with fusion protein and then with D223906(Anti-FAM3D Antibody) at dilution 1/110.



Gel: 12%SDS-PAGE, Lysate: 40 µg;
 Lane: HT-29 cell lysate;
 Primary antibody: 218189(FAM3D Antibody) at dilution 1/800;
 Secondary antibody: HRP-conjugated Goat anti rabbit IgG at 1/5000 dilution;
 Exposure time: 2 minutes



Product Description

Pioneering GTPase and Oncogene Product Development since 2010
