

FASCIN RABBIT PAB

Cat.#: N226021

Product Name: Anti-Fascin Rabbit pAb

Synonyms: 55 kDa actin bundling protein; Actin bundling protein; FAN1; Fascin 1; Fascin; Singed (Drosophila) like (sea urchin fascin homolog like); Fascin homolog 1; Fascin

UNIPROT ID: Q16658

Background: Promotes cross-linkage of parallel actin filaments during the formation of cell protrusions (lamellipodia and filopodia), and therefore plays an important role in regulating cell migration. It has been reported that fascin may also regulate filopodia formation by a mechanism independent of its actin-bundling functions, though less is known about this mechanism of action.

Immunogen: Recombinant protein of human Fascin

Applications: WB,IHC-F,IHC-P,ICC/IF,FC,IP

Recommended Dilutions: WB: 1/500-1/1000 IHC: 1/50-1/100 IF: 1/50-1/200 IP: 1/20 FC: 1/50-1/100

Host Species: Rabbit

Clonality: Rabbit Polyclonal

Clone ID: -

MW: Calculated MW: 55 kDa; Observed MW: 55 kDa

Isotype: IgG

Purification: Affinity Purified

Species Reactivity: Human,Mouse,Rat,Monkey

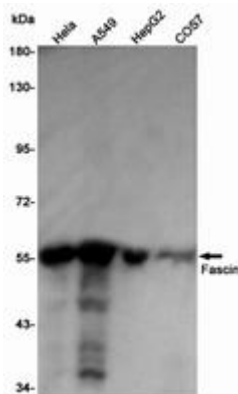
Conjugation: Unconjugated

Modification: Unmodified

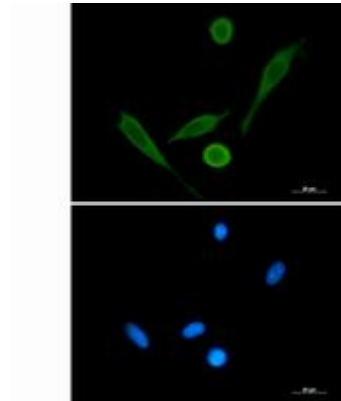
Constituents: PBS (without Mg²⁺ and Ca²⁺), pH 7.3 containing 50% glycerol, 0.5% BSA and 0.02% sodium azide

Research Areas: Cell Biology

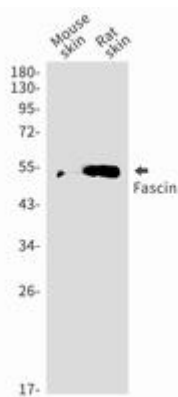
Storage & Shipping: Store at -20°C. Avoid repeated freezing and thawing



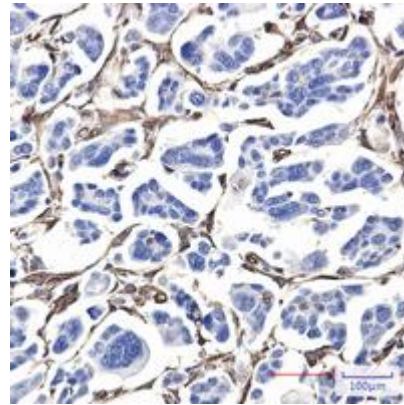
Western blot analysis of Fascin in HeLa, A549, HepG2, COS7 lysates using Fascin antibody



Immunocytochemistry analysis of Fascin (green) in 3T3 using Fascin antibody, and DAPI (blue).



Western blot analysis of Fascin in mouse skin, rat skin lysates using Fascin antibody.



Immunohistochemistry analysis of paraffin-embedded Human Cholangiocarcinoma using Fascin antibody. High-pressure and temperature Sodium Citrate pH 6.0 was used for antigen retrieval.