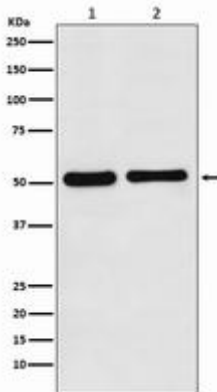


FASCIN RABBIT PAB**Cat.#:** N225882**Product Name:** Anti-Fascin Rabbit pAb**Synonyms:** 55 kDa actin bundling protein; Actin bundling protein; FAN1; Fascin 1; Fascin; Singed (Drosophila) like (sea urchin fascin homolog like); Fascin homolog 1; Fascin**UNIPROT ID:** Q16658**Background:** Promotes cross-linkage of parallel actin filaments during the formation of cell protrusions (lamellipodia and filopodia), and therefore plays an important role in regulating cell migration. It has been reported that fascin may also regulate filopodia formation by a mechanism independent of its actin-bundling functions, though less is known about this mechanism of action.**Immunogen:** A synthesized peptide derived from human Fascin**Applications:** WB,IHC-P,ICC/IF,IP,FC**Recommended Dilutions:** WB: 1/500-1/1000 IHC: 1/50-1/100 IF: 1/50-1/200 IP: 1/20 FC: 1/50-1/100**Host Species:** Rabbit**Clonality:** Rabbit Polyclonal**Clone ID:** -**MW:** Calculated MW: 55 kDa; Observed MW: 55 kDa**Isotype:** IgG**Purification:** Affinity Chromatography**Species Reactivity:** Human,Mouse,Rat**Conjugation:** Unconjugated**Modification:** Unmodified**Constituents:** PBS (without Mg²⁺ and Ca²⁺), pH 7.3 containing 50% glycerol, 0.5% BSA and 0.02% sodium azide**Research Areas:** Cell Biology**Storage & Shipping:** Store at -20°C. Avoid repeated freezing and thawing



Western blot analysis of Fascin in (1) K562 lysates; (2) mouse kidney lysates using Fascin antibody.