

FAT3 RABBIT PAB

Cat.#: S220250

Product Name: Anti-FAT3 Rabbit Polyclonal Antibody

Synonyms: hFat3; CDHF15; CDHR10

UNIPROT ID: Q8TDW7 (Gene Accession - NP_001008781)

Background: May play a role in the interactions between neurites derived from specific subsets of neurons during development.

Immunogen: Synthetic peptide of human FAT3

Applications: ELISA, IHC

Recommended Dilutions: IHC: 25-100; ELISA: 2000-5000

Host Species: Rabbit

Clonality: Rabbit Polyclonal

Isotype: Immunogen-specific rabbit IgG

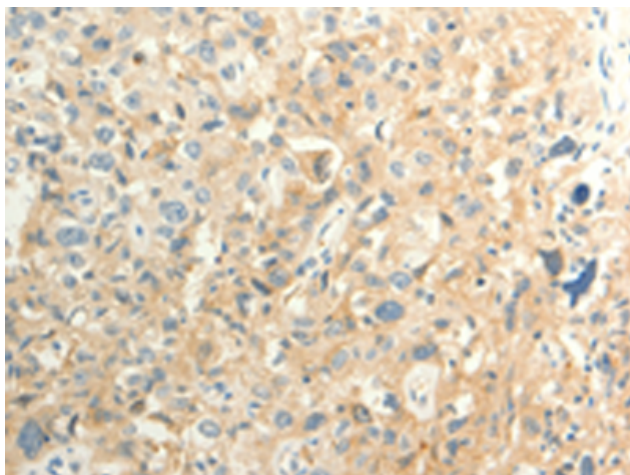
Purification: Antigen affinity purification

Species Reactivity: Human, Mouse, Rat

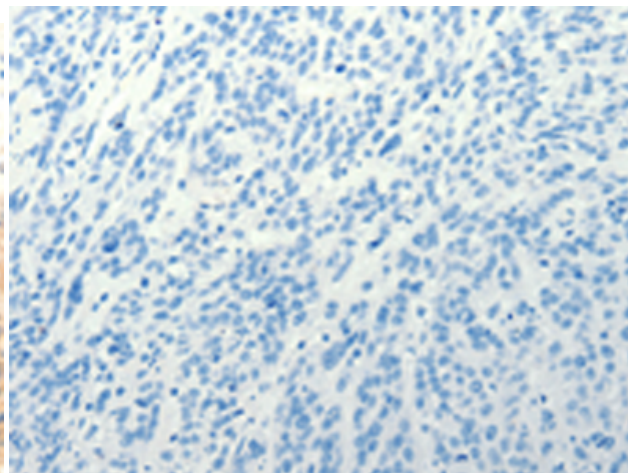
Constituents: PBS (without Mg²⁺ and Ca²⁺), pH 7.4, 150 mM NaCl, 0.05% Sodium Azide and 40% glycerol

Research Areas: Signal Transduction, Neuroscience

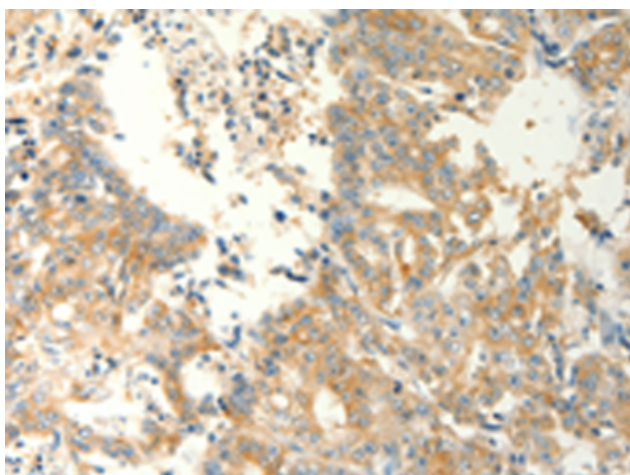
Storage & Shipping: Store at -20°C. Avoid repeated freezing and thawing



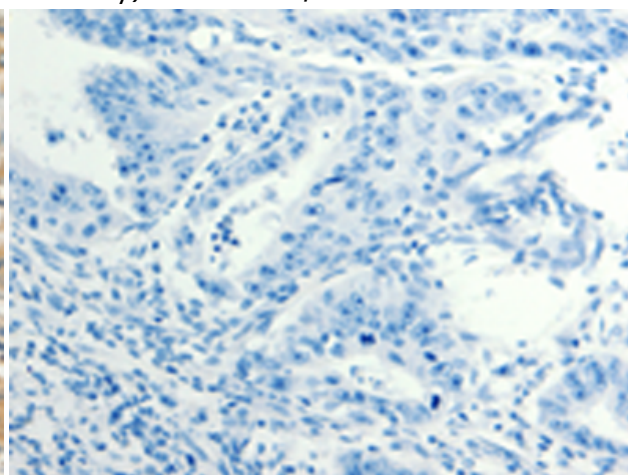
Immunohistochemistry analysis of paraffin embedded Human esophagus cancer tissue using 220250(FAT3 Antibody) at a dilution of 1/30(Cytoplasm).



In comparison with the IHC on the left, the same paraffin-embedded Human esophagus cancer tissue is first treated with the synthetic peptide and then with 220250(Anti-FAT3 Antibody) at dilution 1/30.



The image on the left is immunohistochemistry of paraffin-embedded Human gastric cancer tissue using 220250(Anti-FAT3 Antibody) at a dilution of 1/30.



In comparison with the IHC on the left, the same paraffin-embedded Human gastric cancer tissue is first treated with synthetic peptide and then with D261202(Anti-FAT3 Antibody) at dilution 1/30.